

Help save Corfiot Butterflies



**Corfu Butterfly
Conservation**



Field Guide for butterfly identification

This guide is designed to help promote two different butterfly recording projects. The first, the **Corfu Butterfly Survey (CBS)** aims to record sightings to map the distribution of Corfiot butterflies and so aid their conservation.

However, the **CBS** is part of a broader attempt to monitor and understand the ecology, distribution, and abundance of butterflies throughout Europe. This larger survey, the **European Butterfly Monitoring Scheme (eBMS)** relies on thousands of volunteers who systematically collect field data following a defined methodology.

This Field Guide aims to facilitate the task of field identification of the **75 known butterfly species seen in Corfu**. The guide also serves as a support tool for those involved in the survey and monitoring of butterflies and describes the standardised methodologies used by both the **CBS** and **eBMS**.

Counting butterflies will help to protect them!

Why survey Corfu butterflies?

Little is known about the Corfiot butterflies. However, a group of interested enthusiasts set up **Corfu Butterfly Conservation (CBC)** to support the growing interest in these insects.

CBC's five core aims are to:

- survey the butterflies of Corfu to determine the number of species present on the island, their distribution and flight periods.
- publish the butterfly survey results in a comprehensive Corfu Butterfly Atlas.
- identify potential losses of species and habitats, and inform Greek authorities about which need protecting.
- find out if the butterfly communities of Corfu could be used as indicators of good habitat quality and so help with the conservation of other Corfiot wildlife.
- encourage eco-tourism outside the main tourist season bringing extra revenue to Corfu.

Why monitor Corfu butterflies?

Monitoring the abundance of butterfly populations is an important method for measuring changes in the environment. It provides regular, standardised data to assess the conservation status of butterflies and produces *Butterfly Indicators* that can inform European environmental and agricultural policies. Collecting data for butterfly monitoring is an interesting and relaxing way to spend some of your spare time while helping to understand the conservation status of Corfu's butterflies.

There are different ways to survey and monitor butterflies and Corfu Butterfly Conservation encourages you to use one of the two different methods described below: **CBS** and **eBMS**. Whichever method you use **your data will be shared between both organisations**.

How to record butterflies for the Corfu Butterfly Survey

One simple approach is to **record sightings** of individual butterflies wherever and whenever you see a butterfly in Corfu. All sightings are useful and important to help us in the creation of the first truly comprehensive atlas of all the butterflies found in Corfu.

To participate in the **CBS** you simply have to create an account on the Corfu Butterfly Conservation website, CorfuButterflyConservation.org, and record your individual butterfly sightings there. This can be done at home on a desktop computer or in the field on a smart phone. All the instructions required to undertake this process can be found on the website, along with a lot of other information about our most up-to-date understanding of the current status of all Corfiot butterfly species.

How to do eBMS 15-min count butterfly monitoring

Alternatively, another methodology is to monitor butterflies with **15-min counts** which consists of counting butterflies for 15 minutes in a given area. This can be a path, a delimited area (such as a garden), or simply a fixed point. Corfu has a range of diverse habitats where butterflies can be counted at any point in the day, with one or several 15-min counts, while it is preferably warm and sunny. Counting butterfly abundances will help us better understand changes in butterfly populations and their conservation status.

You can use the eBMS mobile application, **ButterflyCount**, to record 15-min counts. It can be installed on [Android](#) or [iOS](#) devices and allows the collection of butterfly counts from anywhere in Europe. You will need to create an account on the eBMS website and sign in on the app to record your 15-min butterfly counts. Enable your GPS and the app will draw your route while counting butterflies!

More information on the Butterfly Count app in the eBMS website: <https://butterfly-monitoring.net/ebms-app>



Butterfly
Count
App



How to use this Field Guide

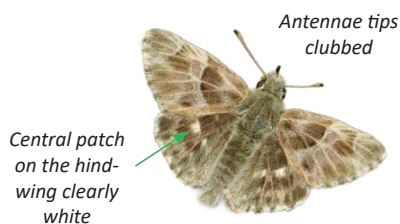
In this field guide, you can find the images of the **75 known butterfly species** currently found on Corfu. Since these butterflies belong to five different families, they have been organized by these groups (see them on the page margins). Every butterfly species has both a common English name and a scientific name (written in *italics*). Information is included for each species' flight period, size category and conservation status (see the legend on the back cover of the Field Guide). Butterfly identification is often best done using photographs. Check the diagnostic characteristics highlighted in this guide with the arrows or circles and the remarks to help you with the identification.

The flight period of these butterflies has been established based on records collected by **CBC** members and literature from the Mediterranean regions. For some species, their flight period in Corfu is not fully understood. Months where the species are likely to be encountered are shaded dark green and months where they might be encountered are shaded pale green. Your sightings can help **CBC** define the flight periods of Corfiot butterflies.

**Please send
photos with
your records!**

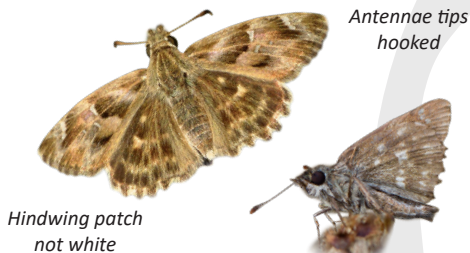
More species to find?

Since 2014, members of CBC have verified the presence of 75 species of butterflies from Corfu, all of which are shown in this guide. We fully expect to discover new species on the island over the course of the **Corfu Butterfly Survey**. Perhaps you will be the next person to discover a new species on Corfu?



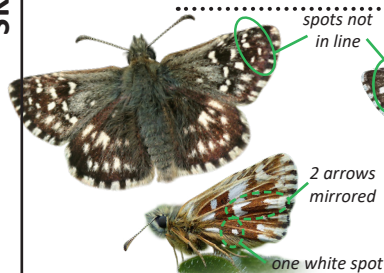
Oriental Marbled Skipper
Carchardus orientalis

J	F	M	A	M	J	J	A	S	O	N	D
---	---	---	---	---	---	---	---	---	---	---	---



Mallow Skipper
Carchardus alceae

J	F	M	A	M	J	J	A	S	O	N	D
---	---	---	---	---	---	---	---	---	---	---	---



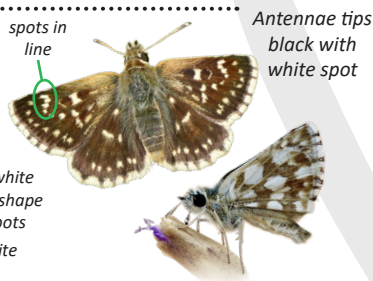
Grizzled Skipper
Pyrgus malvae

J	F	M	A	M	J	J	A	S	O	N	D
---	---	---	---	---	---	---	---	---	---	---	---



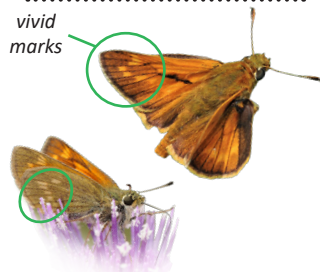
Oberthur's Grizzled Skipper
Pyrgus armoricanus

J	F	M	A	M	J	J	A	S	O	N	D
---	---	---	---	---	---	---	---	---	---	---	---



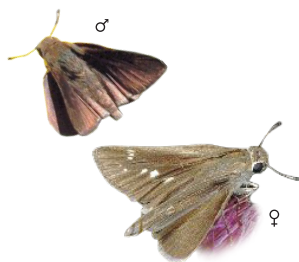
Hungarian Skipper
Spialia orbifer

J	F	M	A	M	J	J	A	S	O	N	D
---	---	---	---	---	---	---	---	---	---	---	---



Large Skipper
Ochlodes sylvanus

J	F	M	A	M	J	J	A	S	O	N	D
---	---	---	---	---	---	---	---	---	---	---	---



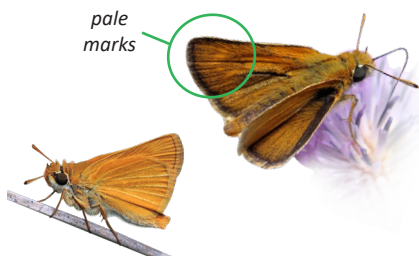
Pygmy/Mediterranean Skipper
Gegenes pumilio/nostradamus

J	F	M	A	M	J	J	A	S	O	N	D
---	---	---	---	---	---	---	---	---	---	---	---



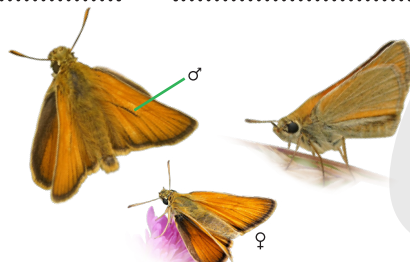
Sage Skipper
Muschampia proto

J	F	M	A	M	J	J	A	S	O	N	D
---	---	---	---	---	---	---	---	---	---	---	---



Lulworth Skipper
Thymelicus acteon

J	F	M	A	M	J	J	A	S	O	N	D
---	---	---	---	---	---	---	---	---	---	---	---



Small Skipper
Thymelicus sylvestris

J	F	M	A	M	J	J	A	S	O	N	D
---	---	---	---	---	---	---	---	---	---	---	---



Scarce Swallowtail
Iphiclides podalirius



J F M A M J J A S O N D



Southern Festoon
Zerynthia polyxena



J F M A M J J A S O N D



Swallowtail
Papilio machaon



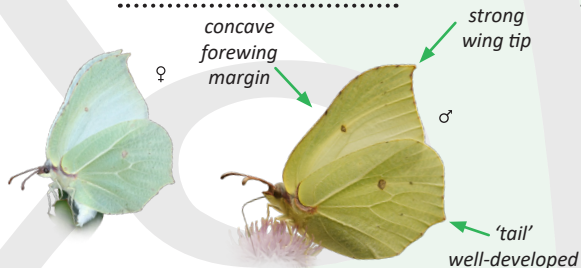
J F M A M J J A S O N D



Southern Swallowtail
Papilio alexanor



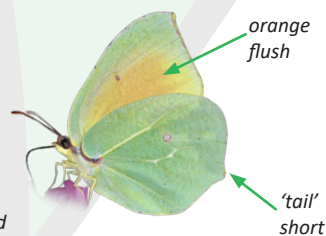
J F M A M J J A S O N D



Brimstone
Gonepteryx rhamni



J F M A M J J A S O N D



Cleopatra
Gonepteryx cleopatra



J F M A M J J A S O N D



Clouded Yellow
Colias crocea



J F M A M J J A S O N D



Powdered Brimstone
Gonepteryx farinosa



J F M A M J J A S O N D



Black-veined White
Aporia crataegi



J	F	M	A	M	J	J	A	S	O	N	D
---	---	---	---	---	---	---	---	---	---	---	---



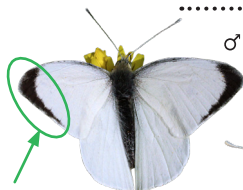
Wood White
Leptidea sinapis



J	F	M	A	M	J	J	A	S	O	N	D
---	---	---	---	---	---	---	---	---	---	---	---



Female has more spots than males



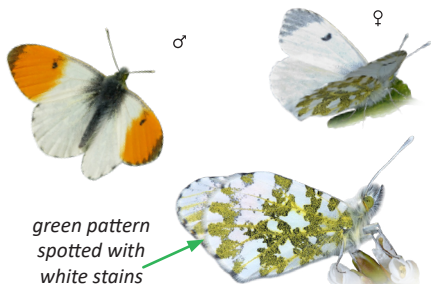
well-defined black mark and along the margin



Large White - *Pieris brassicae*



J	F	M	A	M	J	J	A	S	O	N	D
---	---	---	---	---	---	---	---	---	---	---	---

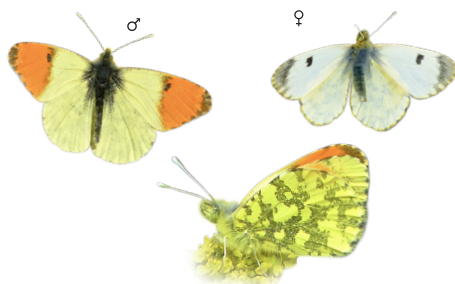


green pattern spotted with white stains

Orange-tip
Anthocharis cardamines



J	F	M	A	M	J	J	A	S	O	N	D
---	---	---	---	---	---	---	---	---	---	---	---



Eastern Orange-tip
Anthocharis damone



J	F	M	A	M	J	J	A	S	O	N	D
---	---	---	---	---	---	---	---	---	---	---	---



green pattern with circular white stains

Eastern Dappled White
Euchloe ausonia



J	F	M	A	M	J	J	A	S	O	N	D
---	---	---	---	---	---	---	---	---	---	---	---



Mickey mouse pattern

Eastern Bath White
Pontia edusa

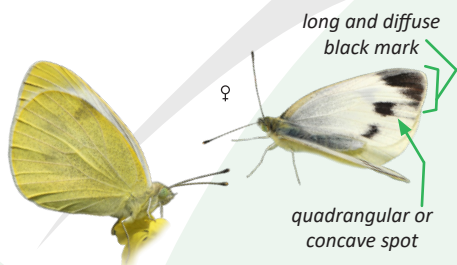


J	F	M	A	M	J	J	A	S	O	N	D
---	---	---	---	---	---	---	---	---	---	---	---



Krueper's Small White
Pieris krueperi

J F M A M J J A S O N D



Southern Small White
Pieris mannii

J F M A M J J A S O N D

black mark a bit
diffuse and not long



Small White
Pieris rapae

J F M A M J J A S O N D



Green-veined White
Pieris napi

J F M A M J J A S O N D



Grecian Copper
Lycaena ottomana

J F M A M J J A S O N D



Small Copper
Lycaena phlaeas

J F M A M J J A S O N D



Green Hairstreak
Callophrys rubi

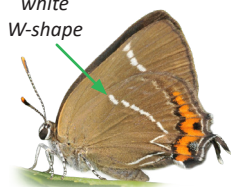
J F M A M J J A S O N D



Purple Hairstreak
Favonius quercus

J F M A M J J A S O N D

white
W-shape



White-letter Hairstreak
Satyrium w-album

J F M A M J J A S O N D

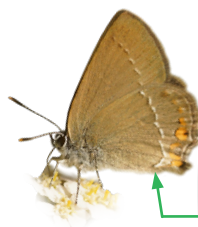
short tail
and series of
orange spots



Ilex Hairstreak
Satyrium ilicis

J F M A M J J A S O N D

vague tail
and females
have a black
cap at end of
abdomen



Sloe Hairstreak
Satyrium acaciae

J F M A M J J A S O N D

white line
forms a
linear curve



Geranium Bronze
Cacyreus marshalli

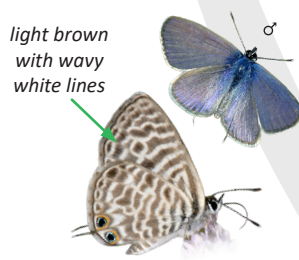
J F M A M J J A S O N D



Little Tiger Blue
Tarucus balkanicus

J F M A M J J A S O N D

light brown
with wavy
white lines



Lang's Short-tailed Blue
Leptotes pirithous

J F M A M J J A S O N D

Broad white band
on hindwing
underside



Long-tailed Blue
Lampides boeticus

J F M A M J J A S O N D



Eastern Baton Blue
Pseudophilotes vicrama

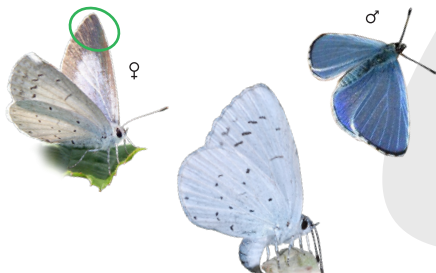
J F M A M J J A S O N D

Males are
dusted in pale
blue scales



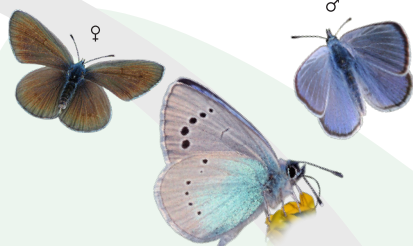
Small Blue
Cupido minimus

J F M A M J J A S O N D



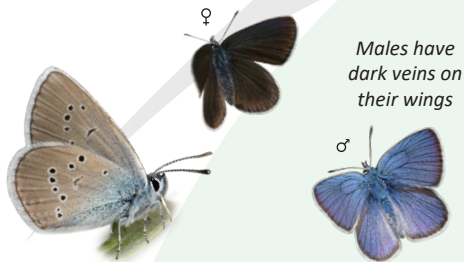
Holly Blue
Celastrina argiolus

J F M A M J J A S O N D



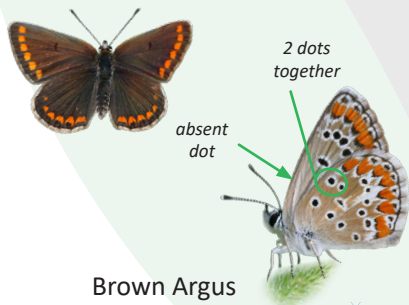
Green-underside Blue
Glaucopsyche alexis

J F M A M J J A S O N D



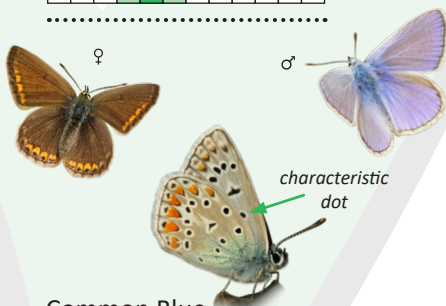
Mazarine Blue
Cyaniris semiargus

J F M A M J J A S O N D



Brown Argus
Aricia agestis

J F M A M J J A S O N D



Common Blue
Polyommatus icarus

J F M A M J J A S O N D



Red Admiral
Vanessa atalanta

J F M A M J J A S O N D



Plain Tiger
Danaus chrysippus

J F M A M J J A S O N D



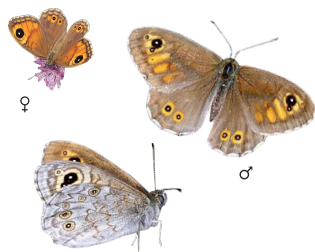
Painted Lady
Vanessa cardui

J F M A M J J A S O N D



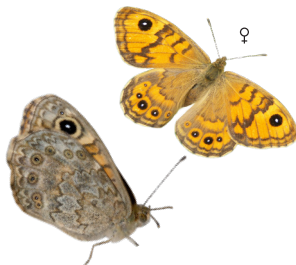
Peacock
Aglais io

J F M A M J J A S O N D



Large Wall Brown
Lasiommata maera

J F M A M J J A S O N D



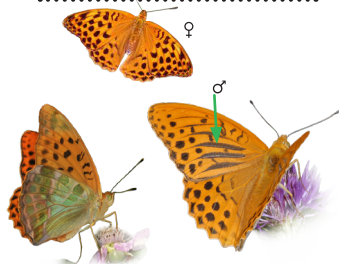
Wall Brown
Lasiommata megera

J F M A M J J A S O N D



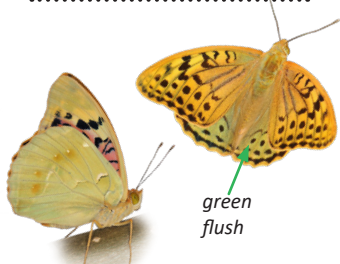
Speckled Wood
Pararge aegeria

J F M A M J J A S O N D



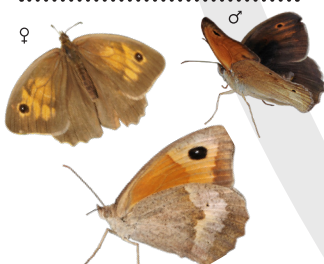
Silver-Washed Fritillary
Argynnis paphia

J F M A M J J A S O N D



Cardinal
Argynnis pandora

J F M A M J J A S O N D



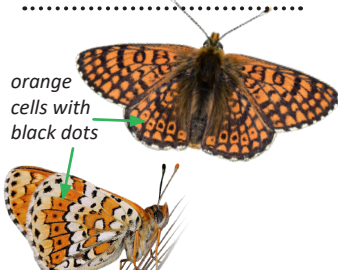
Meadow Brown
Maniola jurtina

J F M A M J J A S O N D



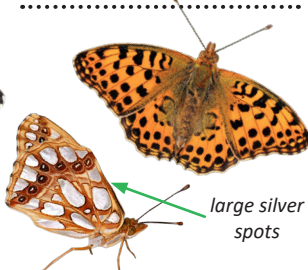
Spotted Fritillary
Melitaea didyma

J F M A M J J A S O N D



Glanville Fritillary
Melitaea cinxia

J F M A M J J A S O N D



Queen of Spain Fritillary
Issoria lathonia

J F M A M J J A S O N D



Nettle-tree Butterfly
Libythea celtis

J F M A M J J A S O N D



Comma
Polygonia c-album

J F M A M J J A S O N D



Southern Comma
Polygonia egea

J F M A M J J A S O N D

Two small white spots under the eye spot of the forewing

Dark band along the outer edge of the hindwing

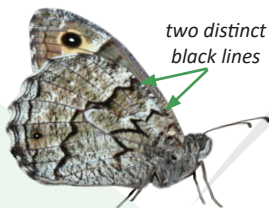


Tree Grayling
Hipparchia statilinus



J F M A M J J A S O N D

two distinct black lines

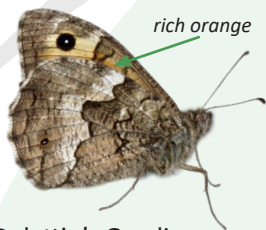


Eastern Rock Grayling
Hipparchia syriaca



J F M A M J J A S O N D

rich orange



Delattin's Grayling
Hipparchia volgensis



J F M A M J J A S O N D



Small Heath
Coenonympha pamphilus



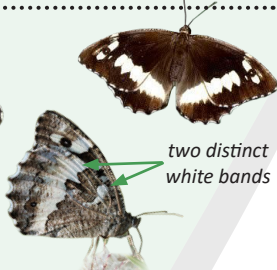
J F M A M J J A S O N D



Balkan Marbled White
Melanargia larissa



J F M A M J J A S O N D



Great Banded Grayling
Brintesia circe



J F M A M J J A S O N D



Small Tortoiseshell
Aglais urticae



J F M A M J J A S O N D



Lattice Brown
Kirinia roxelana



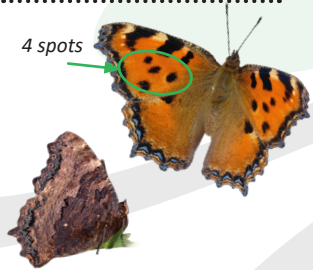
J F M A M J J A S O N D



Southern White Admiral
Limenitis reducta



J F M A M J J A S O N D



Large Tortoiseshell
Nymphalis polychloros



J F M A M J J A S O N D



Camberwell Beauty
Nymphalis antiopa



J F M A M J J A S O N D



Two-tailed Pasha
Charaxes jasius



J F M A M J J A S O N D

Butterfly Conservation Europe and the **UK Centre for Ecology and Hydrology (UKCEH)** formed the **European Butterfly Monitoring Scheme (eBMS)** to bring together data from different Butterfly Monitoring Schemes of Europe. All member countries share their data annually to the eBMS database, to analyse and produce the population trends of the European butterfly species and European Butterfly Indicators, which provide an expert basis for further action in the protection of butterflies and their habitats.

Data collected from Corfu by the eBMS and by the **Corfu Butterfly Survey (CBS)** will be used by **Corfu Butterfly Conservation (CBC)** to publish the first truly comprehensive Corfiot butterfly atlas. See www.corfubutterflyconservation.org for more details.

This guide was funded by the DG-Environment from the European Commission under the SPRING contract and by the Rothschild Foundation. You can find and download this guide on the eBMS website: www.butterfly-monitoring.net/bms-materials and www.corfubutterflyconservation.org/downloads

Authors: Cristina G. Sevilleja (**Dutch Butterfly Conservation**), Dan Danahar (**Corfu Butterfly Conservation**) and Sam Ellis (**Butterfly Conservation**)

Photography: Dan Danahar, Sam Ellis, Giannis Gasteratos, Paolo Mazzei, Marco Bonifacino, Raniero Panfili and Daniel Morel (www.leps.it), Jose Rodrigo Dapena, Christodoulos Makris, Christos Zoumides, Hasan Bağlar, Martin Wiemers, Rudi Verovnik and Chris van Swaay.

Graphic design: Eveline van der Jagt & Cristina Sevilleja

Translation of the Greek version by Anne Sordinas

CBS - Corfu Butterfly Survey

eBMS - European Butterfly Monitoring Scheme

Conservation status based on the European Red List (van Swaay et al., 2010):

Near Threatened ●

Flight period: months when butterflies are seen
Months shaded darker green: high probability;
pale green: lower probability



Butterfly size:

Small Medium Large

Sex:

♀ Female ♂ Male



Symbols:

→ ○ Specific characteristics to identify the species

Cover page image *Papilio alexanor* and image second page of *Lycaena dispar* by Dan Danahar



Corfu Butterfly Conservation

