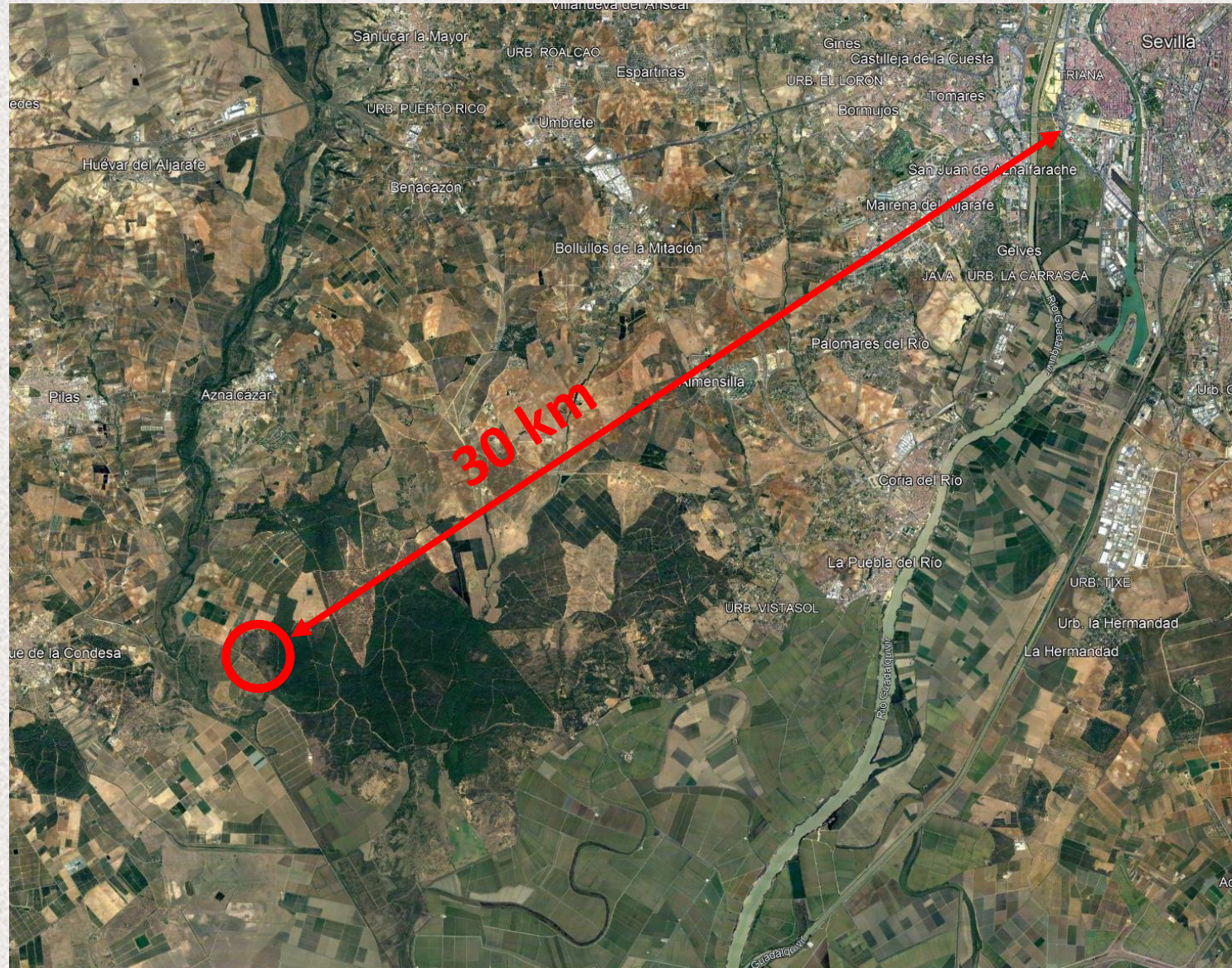
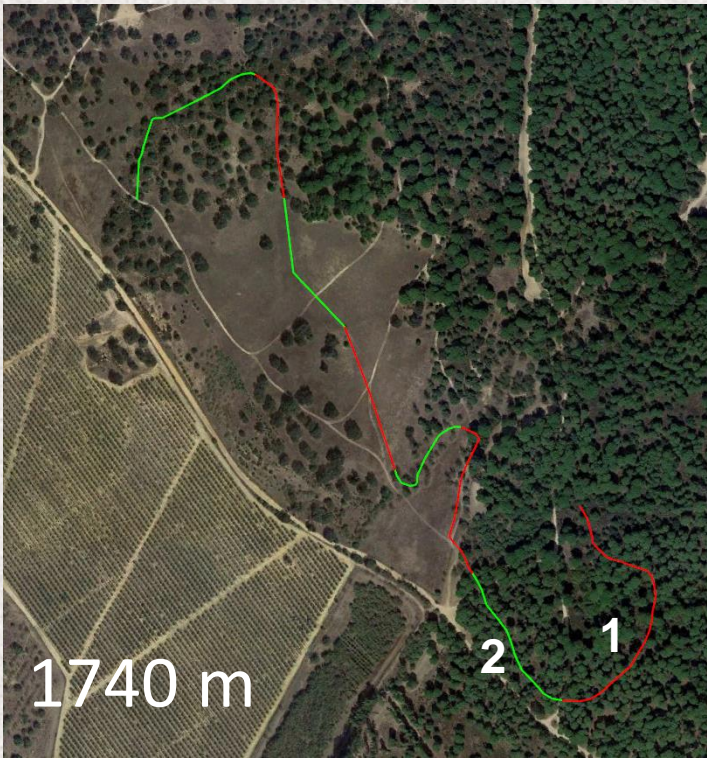


Más que mariposas: el recorrido BMS de la Dehesa de Tornero (Aznalcázar, Sevilla)



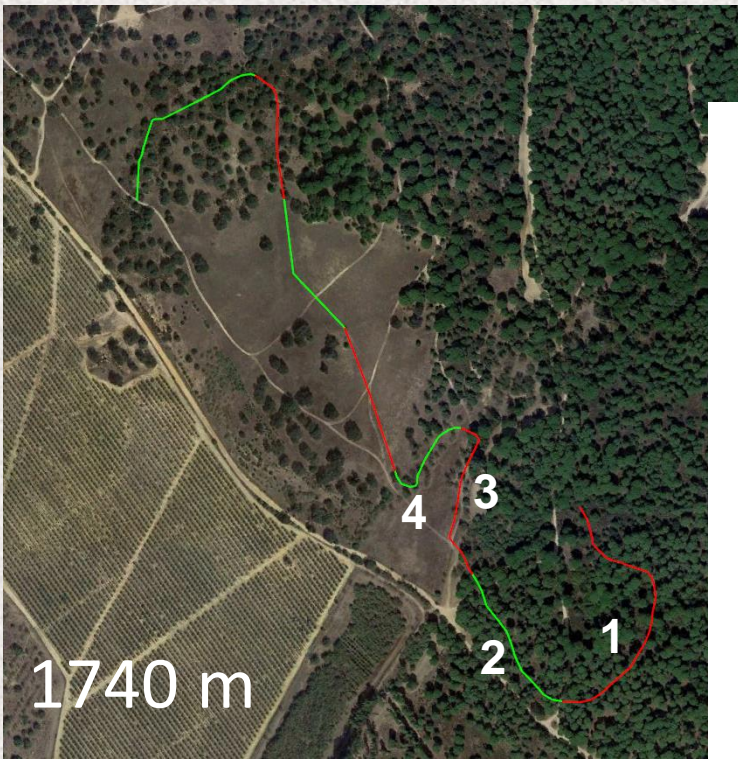
Jacinto Román





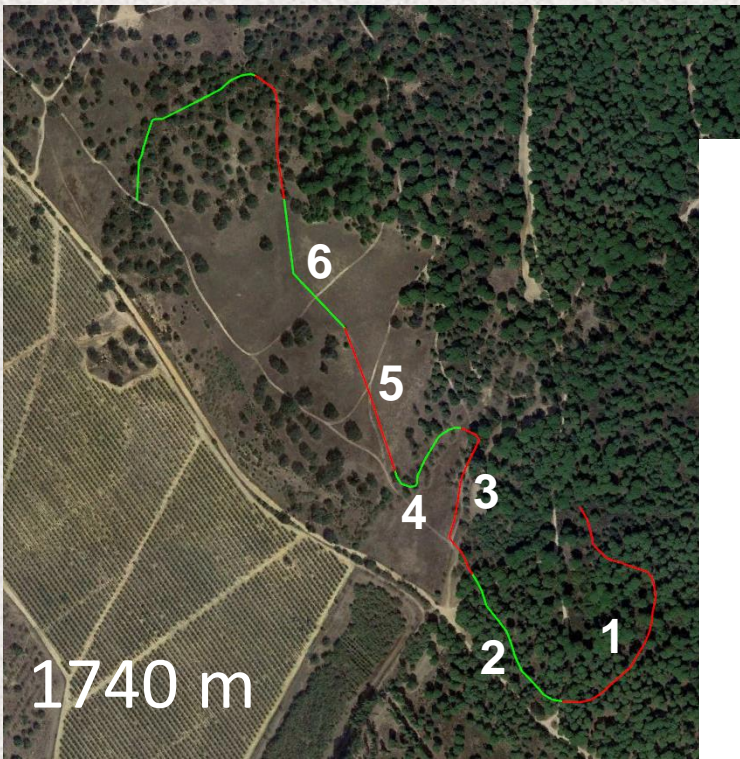
- | | | |
|---|-------|-------|
| 1 | Pinar | 366 m |
| 2 | Pinar | 207 m |





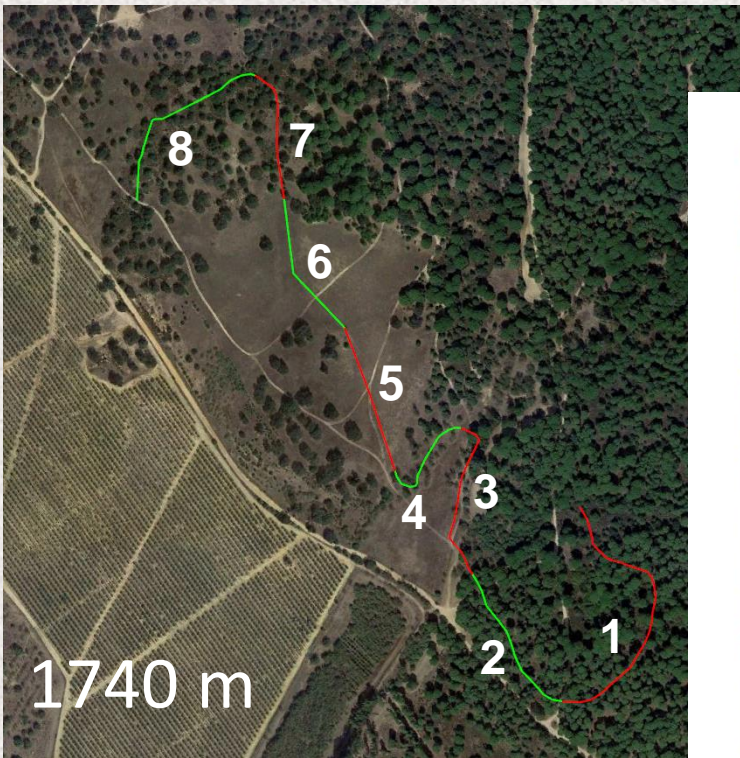
- | | | |
|---|----------|-------|
| 1 | Pinar | 366 m |
| 2 | Pinar | 207 m |
| 3 | Fresneda | 217 m |
| 4 | Fresneda | 139 m |





1	Pinar	366 m
2	Pinar	207 m
3	Fresneda	217 m
4	Fresneda	139 m
5	Pradera	194 m
6	Pradera	191 m





1	Pinar	366
2	Pinar	207
3	Fresneda	217
4	Fresneda	139
5	Pradera	194
6	Pradera	191
7	Dehesa	173
8	Dehesa	253





PARTICULARIDADES

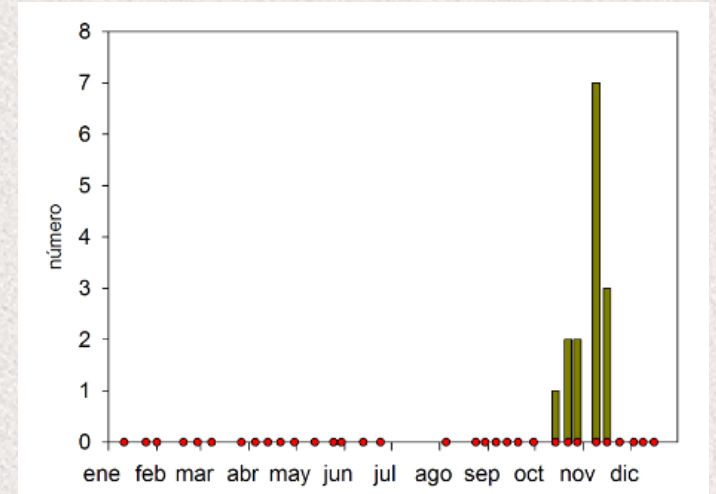
- Se hace todo el año (10 años; 397 visitas).
- Se anotan otras especies: libélulas, *Argiope*, conejos, *Utetheisa*, *Libelloides*, *Bombus*, mantis...

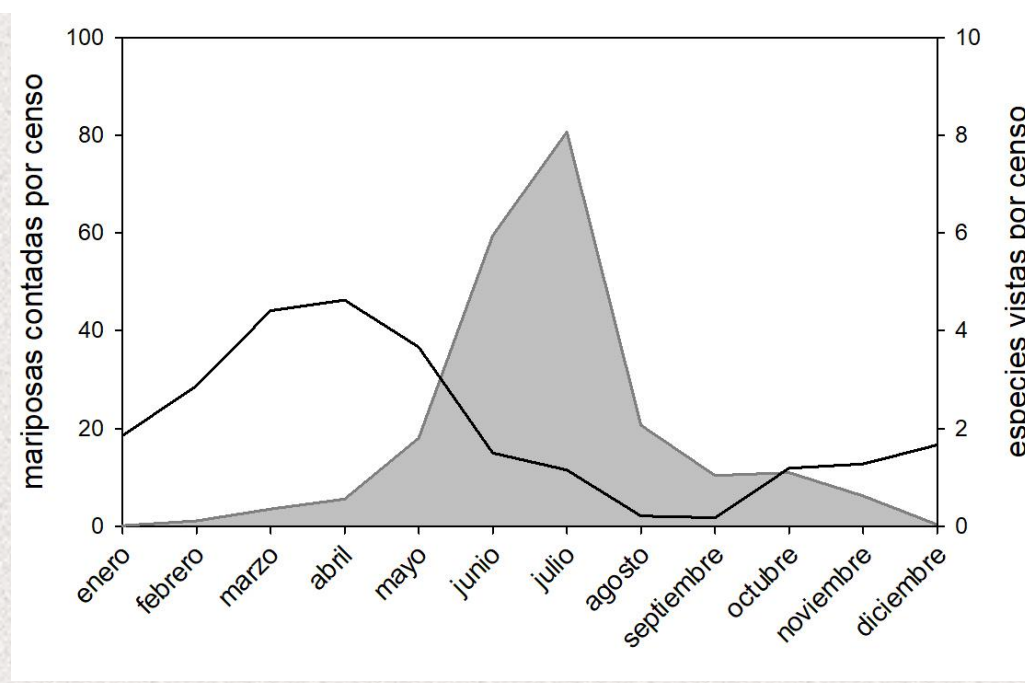
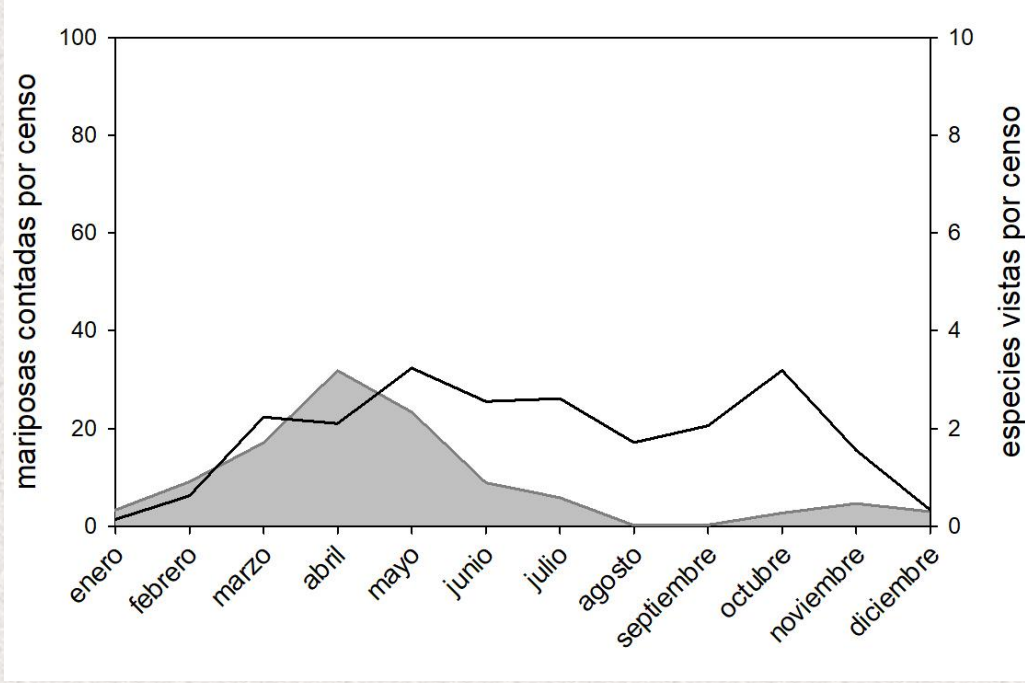
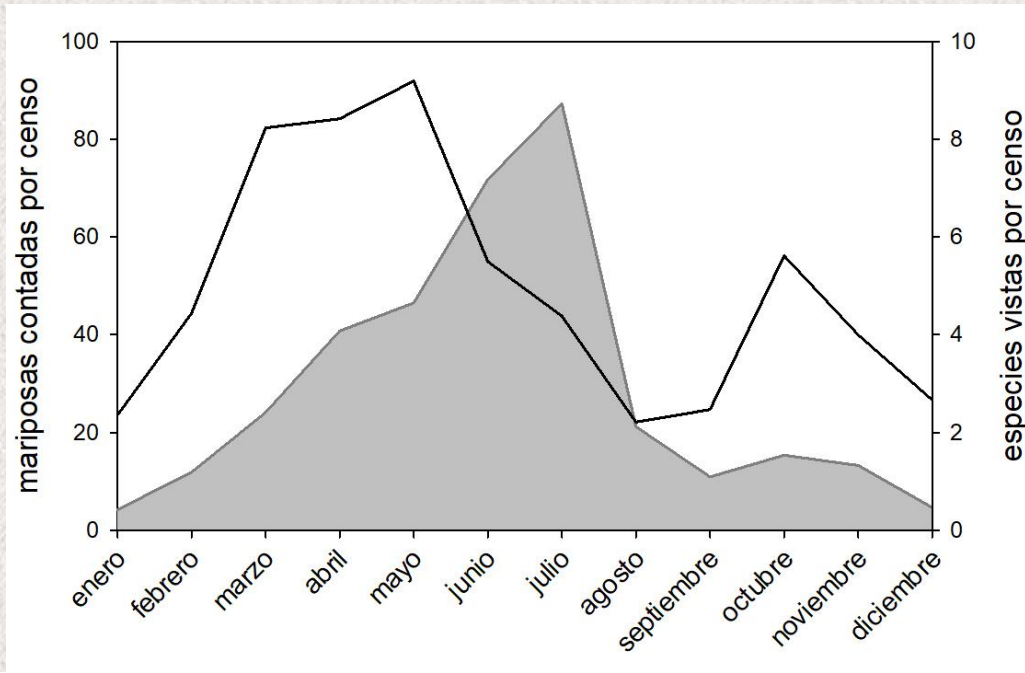
AÑO	Número visitas
2014	40
2015	33
2016	41
2017	43
2018	46
2019	40
2020	40
2021	41
2022	42
2023	31

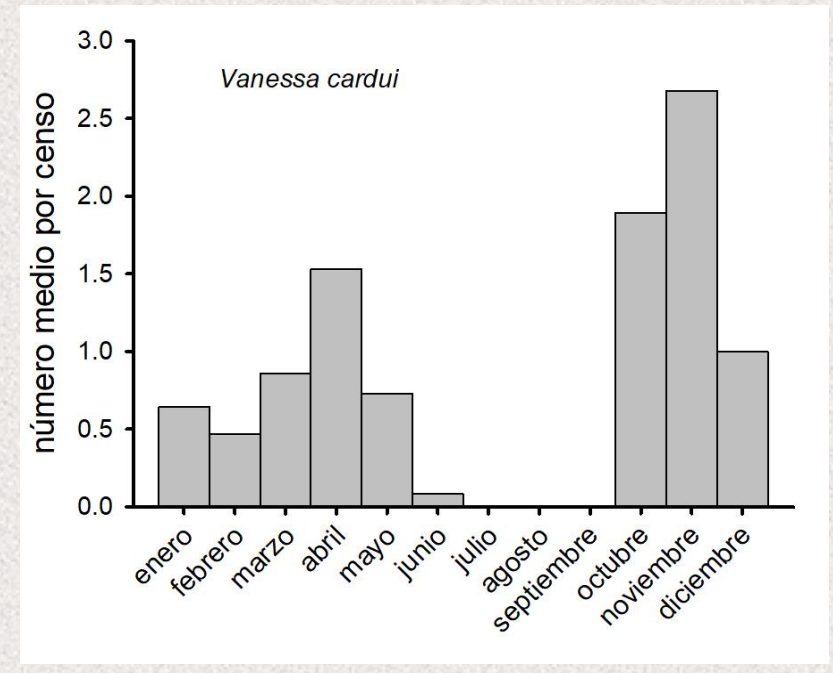
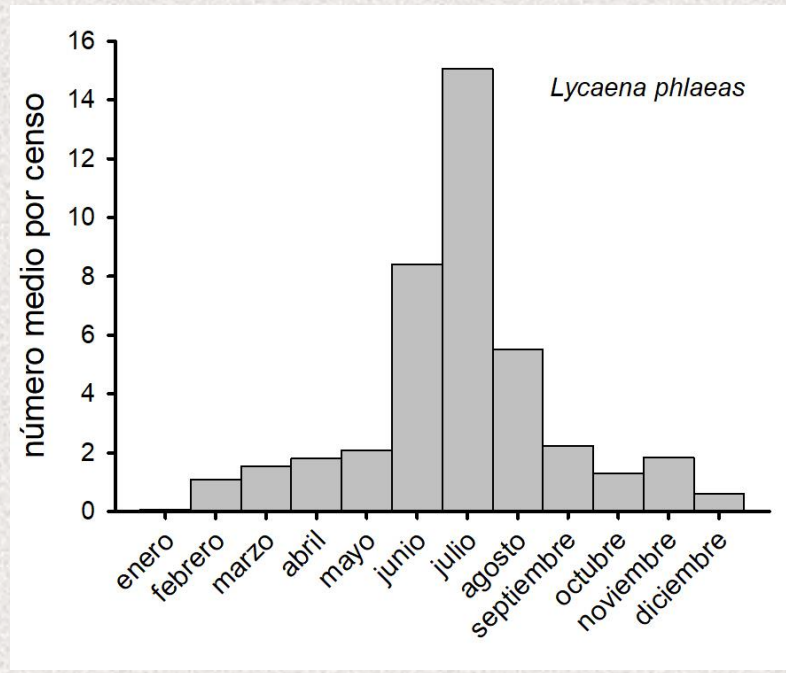
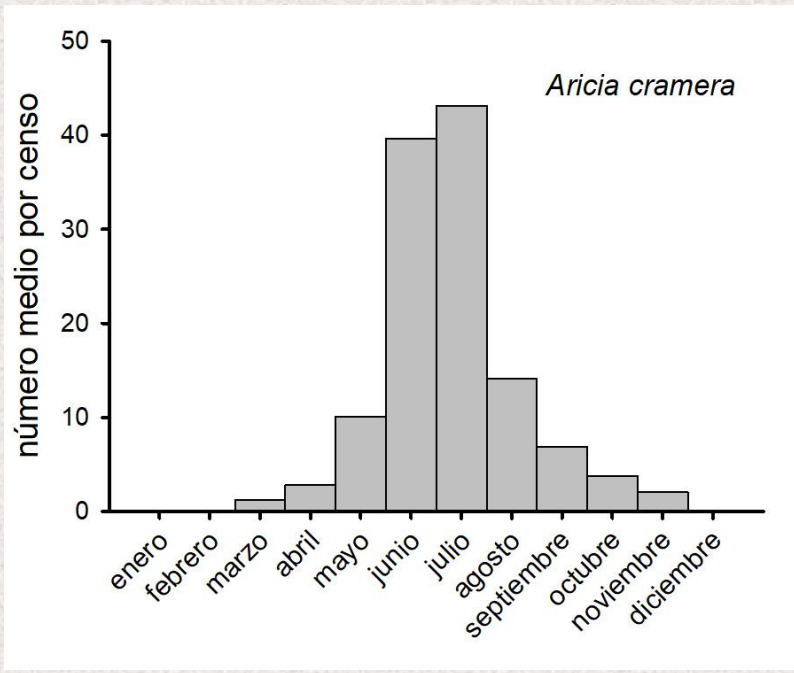
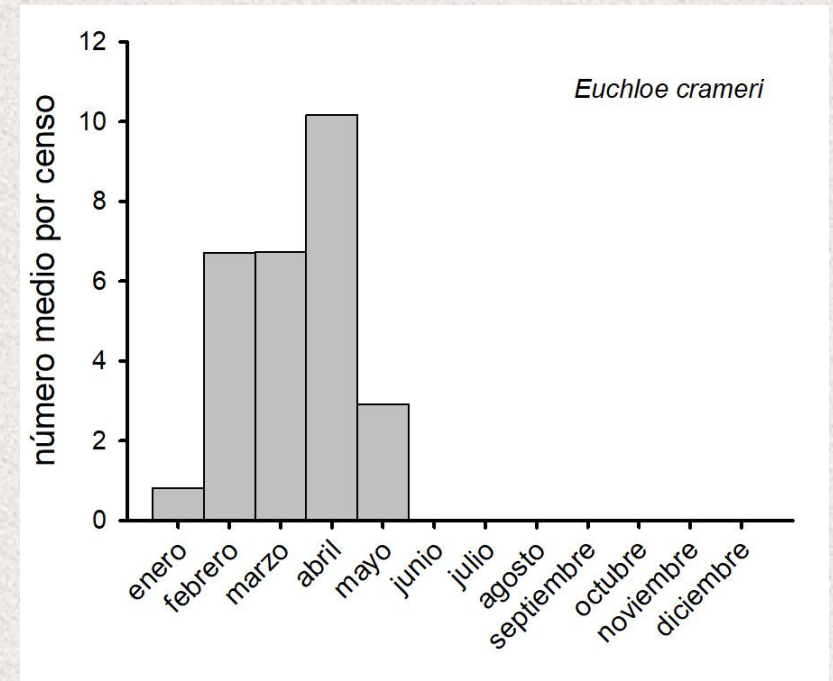
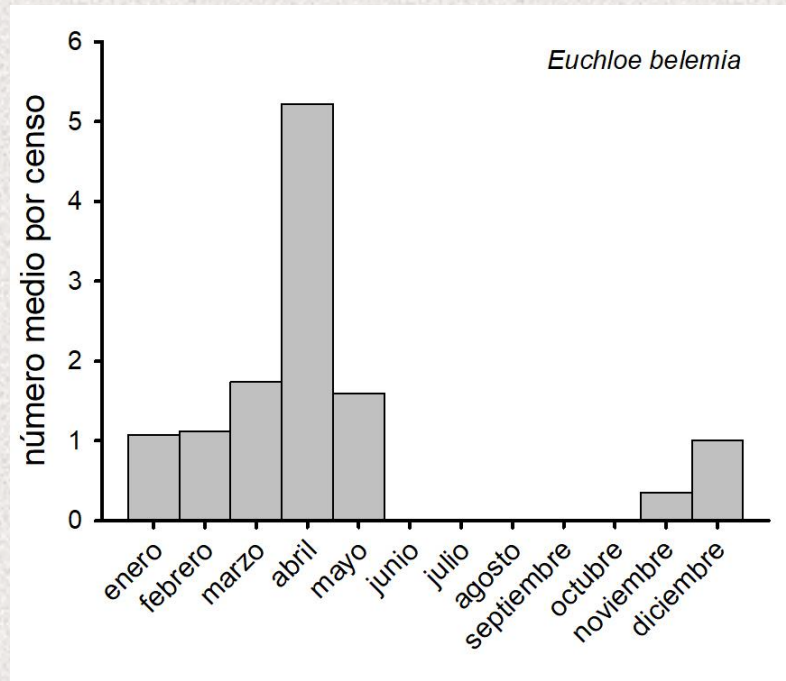
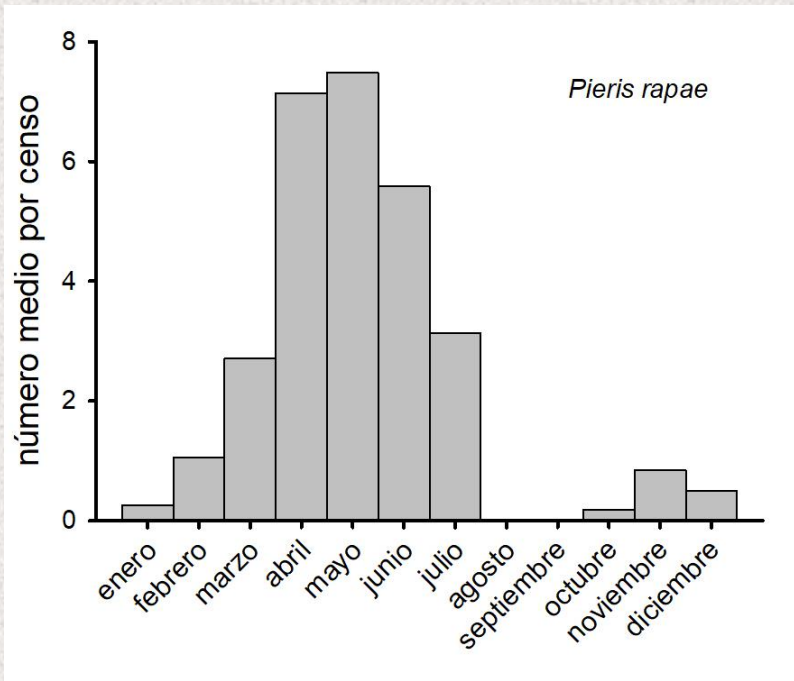
MES	Número visitas	Número ceros
Enero	28	2
Febrero	33	1
Marzo	35	-
Abril	36	-
Mayo	37	-
Junio	36	-
Julio	31	1
Agosto	30	4
Septiembre	34	3
Octubre	38	-
Noviembre	31	2
Diciembre	28	4

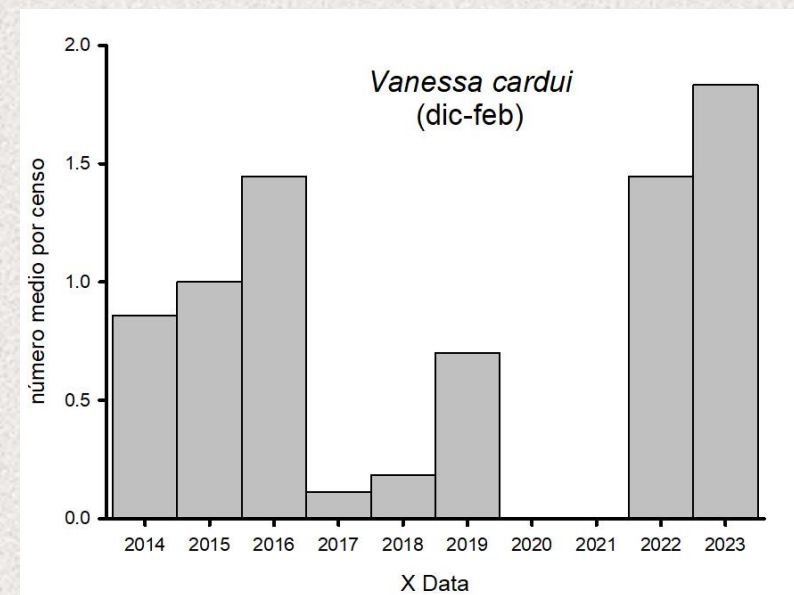
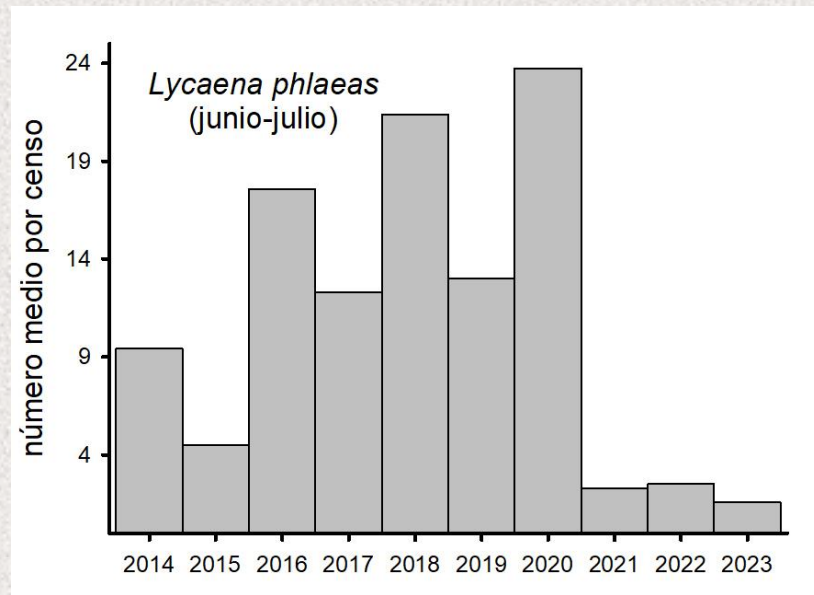
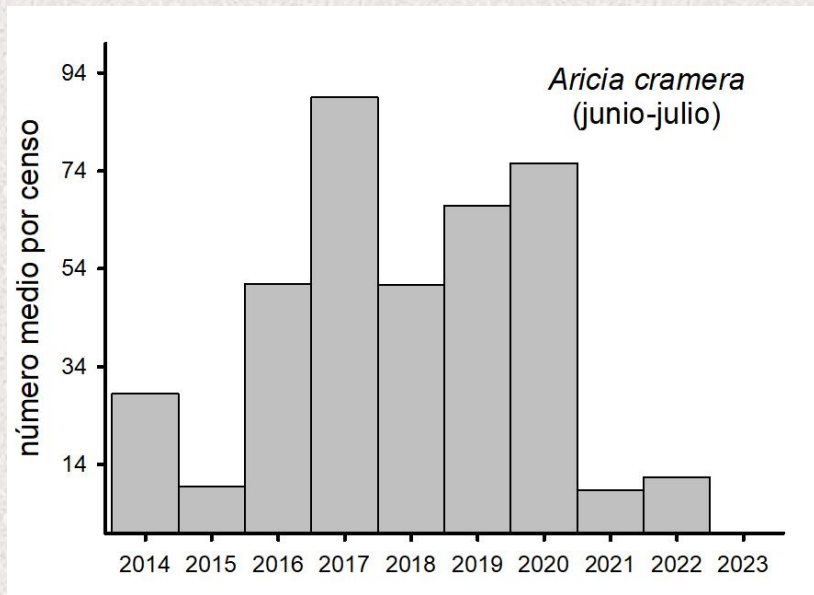
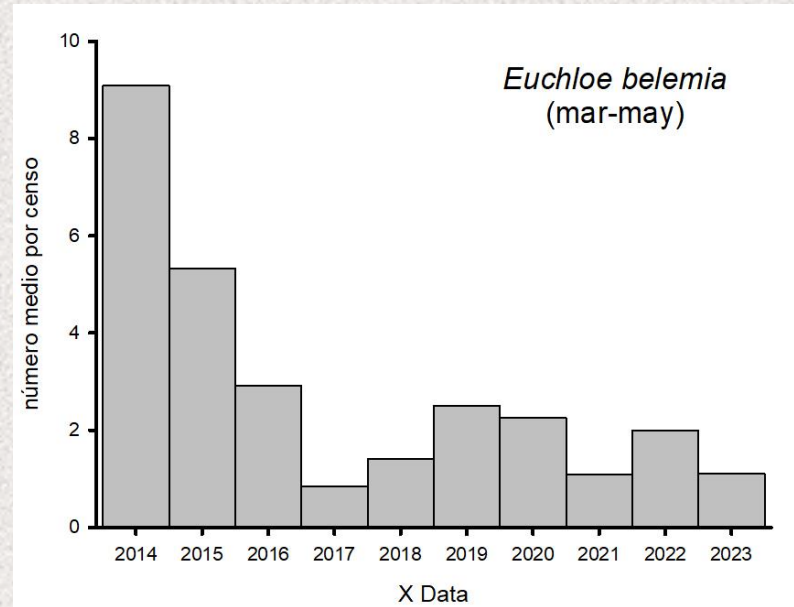
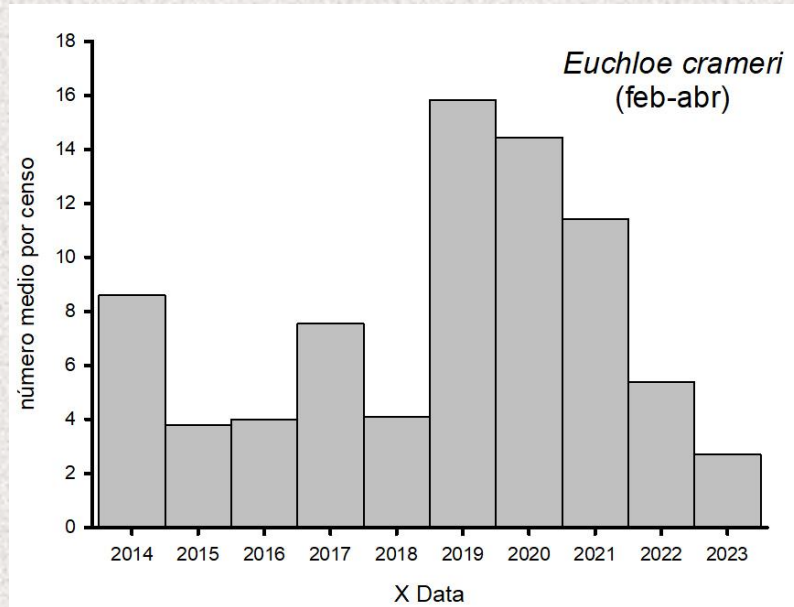
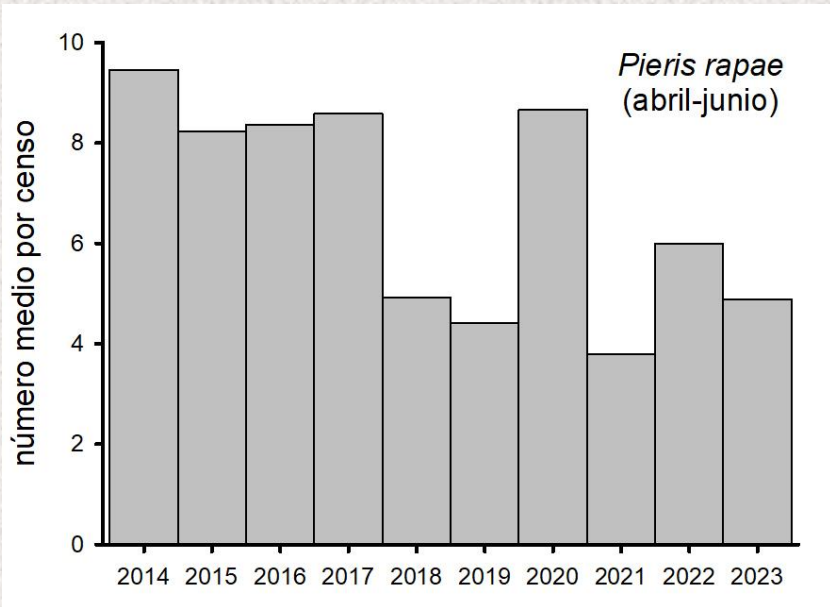
<i>Aricia cramera</i>	4136	<i>Lampides boeticus</i>	39
<i>Lycaena phlaeas</i>	1364	<i>Papilio machaon</i>	36
<i>Pieris rapae</i>	1017	<i>Thymelicus acteon</i>	34
<i>Euchloe crameri</i>	961	<i>Pararge aegeria</i>	28
<i>Colias crocea</i>	907	<i>Borbo borbonica</i>	23
<i>Euchloe belemia</i>	415	<i>Zizeeria knysna</i>	21
<i>Pieris brassicae</i>	334	<i>Celastrina argiolus</i>	19
<i>Vanessa cardui</i>	332	<i>Carcharodus tripolinus</i>	17
<i>Leptotes pirithous</i>	332	<i>Tomares ballus</i>	15
<i>Maniola jurtina</i>	253	<i>Gonepteryx cleopatra</i>	6
<i>Polyommatus celina</i>	234	<i>Gegenes nostradamus</i>	3
<i>Pontia daplidice</i>	200	<i>Glaucopsyche melanops</i>	2
<i>Callophrys rubi</i>	146	<i>Laeosopis roboris</i>	2
<i>Zerynthia rumina</i>	125	<i>Charaxes jasius</i>	2
<i>Vanessa atalanta</i>	79	<i>Issoria lathonia</i>	2
<i>Satyrium esculi</i>	74	<i>Pyronia cecilia</i>	1
<i>Coenonympha pamphilus</i>	47	TOTAL	11209

33 especies

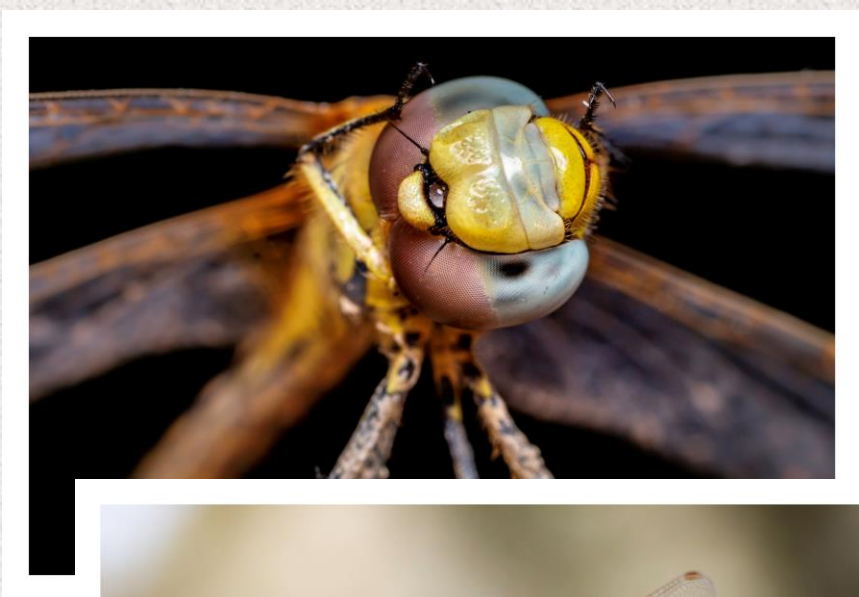
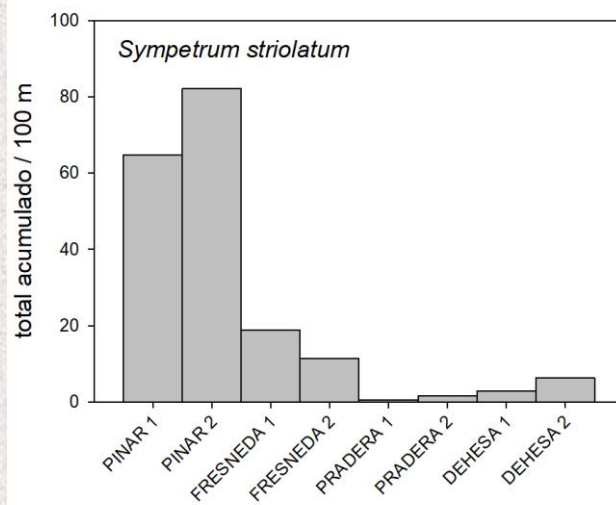
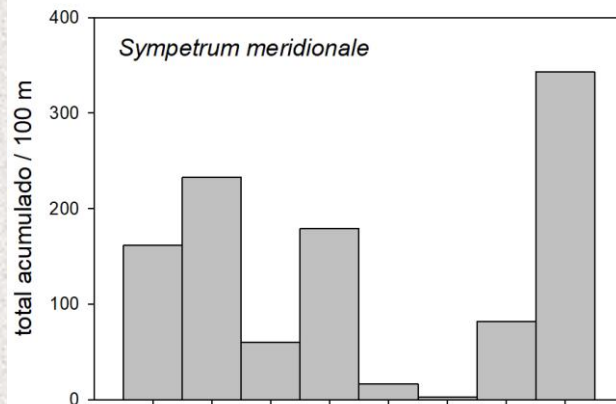
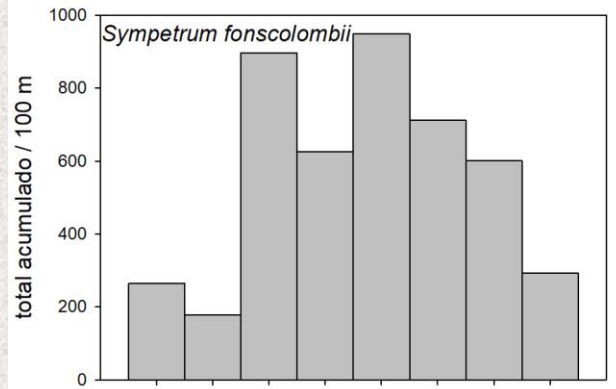


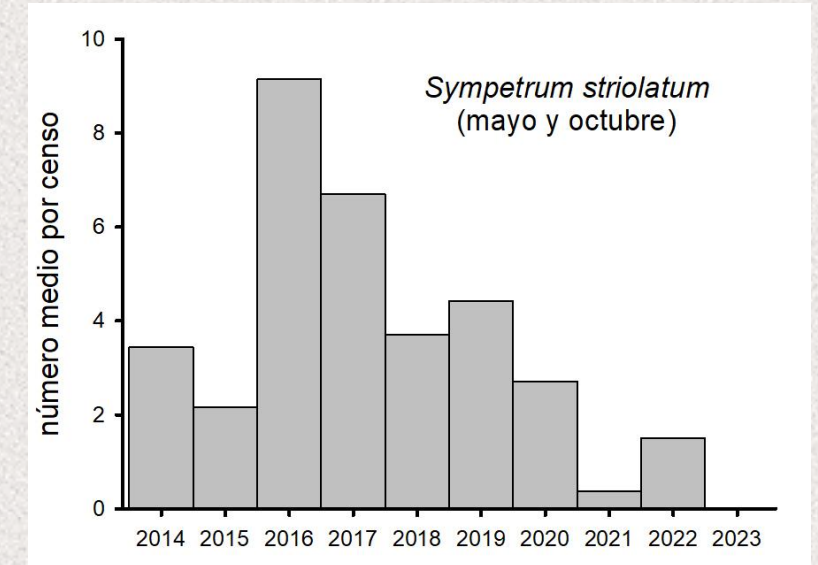
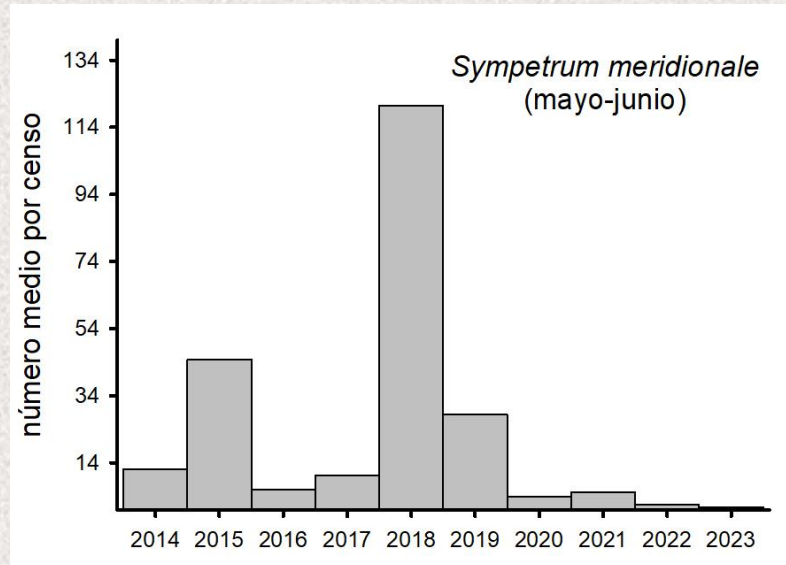
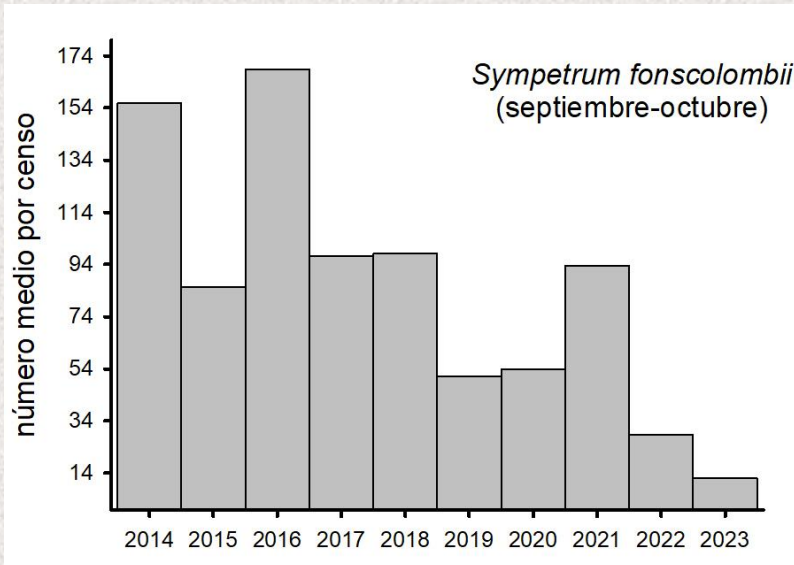
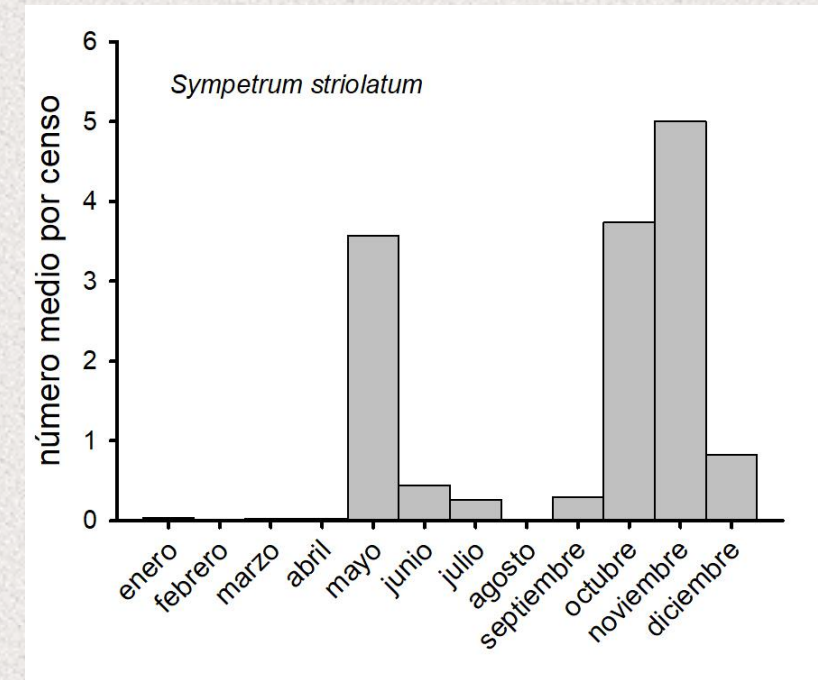
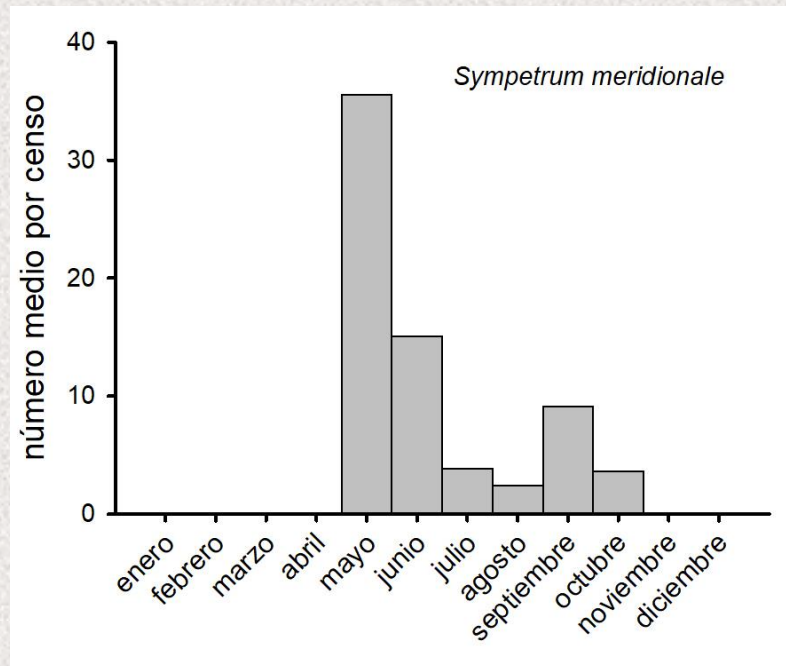
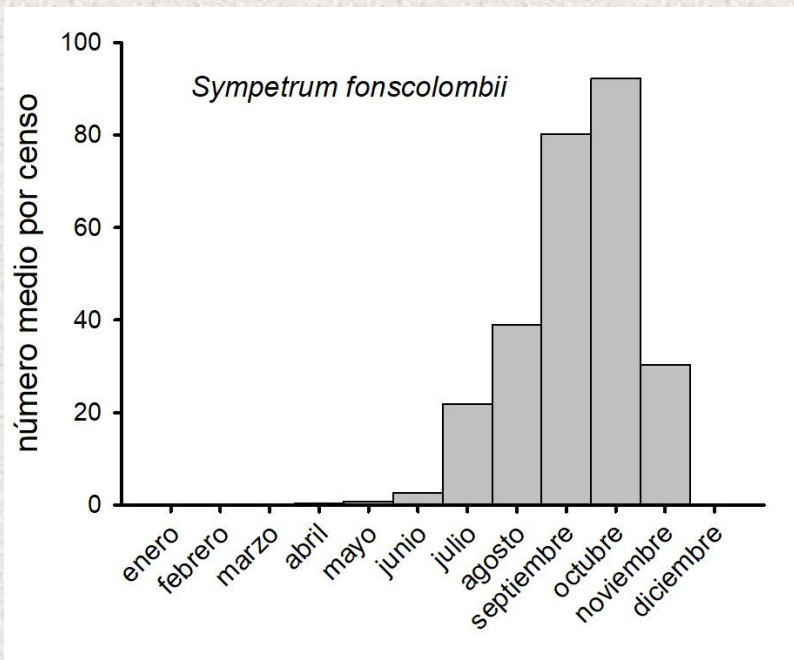


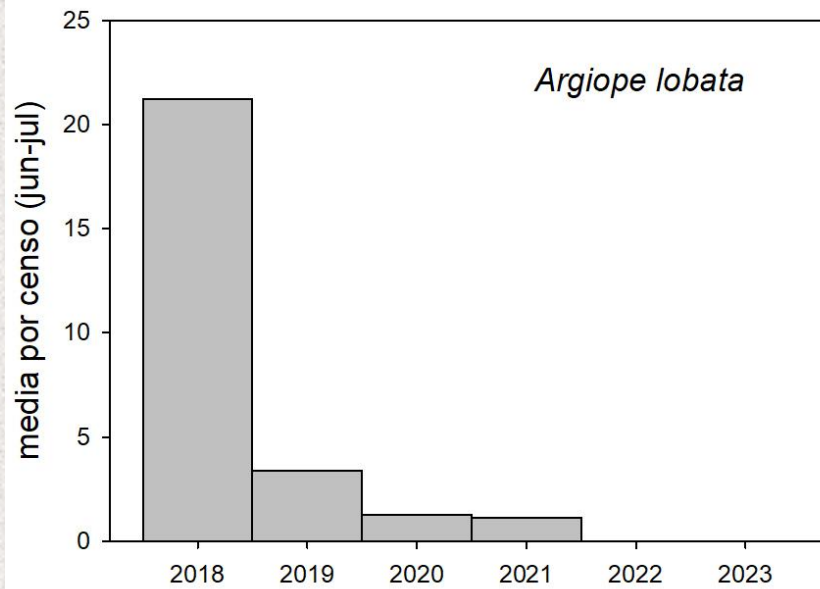
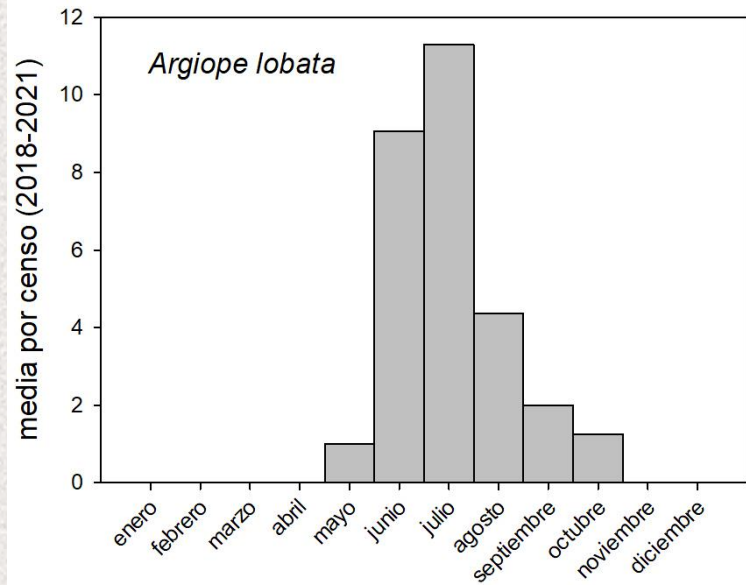




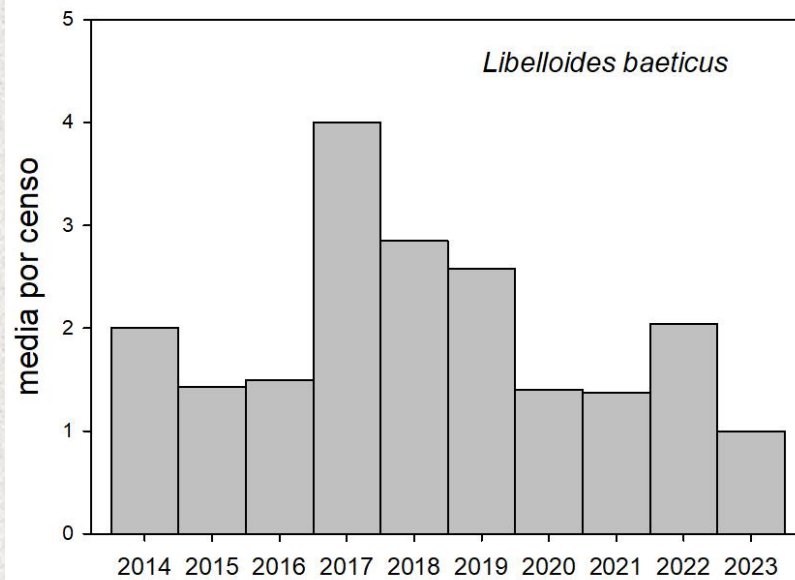
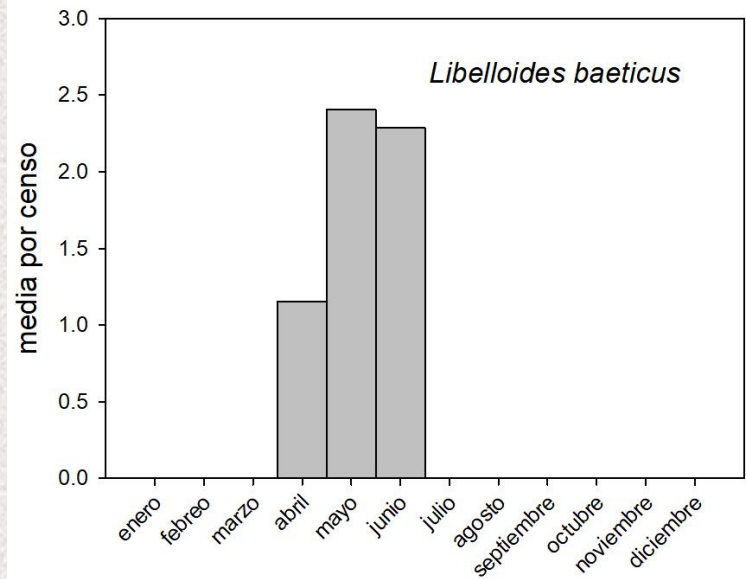
<i>Sympetrum fonscolombii</i>	9128
<i>Sympetrum meridionale</i>	2500
<i>Sympetrum striolatum</i>	489
<i>Crocothemis erythraea</i>	426
<i>Lestes virens</i>	284
<i>Orthetrum cancellatum</i>	197
<i>Sympecma fusca</i>	126
<i>Aeshna mixta</i>	113
<i>Trithemis annulata</i>	19
<i>Anax ephippiger</i>	9
<i>Lestes viridis</i>	6
<i>Anax parthenope</i>	5
<i>Ischnura graellsii</i>	2
<i>Lestes macrostigma</i>	1
<i>Orthetrum trinacria</i>	1
<i>Trithemis kirbyi</i>	1
TOTAL	13307







Lacorto Román



Lacorto Román



FIN