

Butterfly Monitoring in Europe

eBMS & GBI meeting for EU Member States



- 9.00-11.00h CET
- Andreas Gumbert EU DG ENV
- Introduction – Chris van Swaay
- Grassland Butterfly Index GBI – Reto Schmucki
- Capacity building – Cristina Sevilleja
- Clarification questions directly after each talk, discussion after the last talks; talks will be recorded.
- Questions, remarks and discussion (not recorded)

Expanding Monitoring of Butterflies for Restoration And Conservation across Europe 2021-2026 (EMBRACE)



Chris van Swaay

De Vlinderstichting / Dutch Butterfly Conservation

Butterfly Conservation Europe (BCE)

Centre for Ecology and Hydrology (UKCEH)

Butterfly Conservation (BC UK)



Expanding Monitoring of Butterflies for Restoration And Conservation across Europe 2021-2026 (EMBRACE)



Chris van Swaay

De Vlinderstichting / Dutch Butterfly Conservation

Butterfly Conservation Europe (BCE)

Centre for Ecology and Hydrology (UKCEH)

Butterfly Conservation (BC UK)



Expanding Monitoring of Butterflies for Restoration And Conservation across Europe 2021-2026 (EMBRACE)



Chris van Swaay

De Vlinderstichting / Dutch Butterfly Conservation

Butterfly Conservation Europe (BCE)

Centre for Ecology and Hydrology (UKCEH)

Butterfly Conservation (BC UK)



UK Centre for
Ecology & Hydrology



Expanding Monitoring of Butterflies for Restoration And Conservation across Europe 2021-2026 (EMBRACE)



Chris van Swaay

De Vlinderstichting / Dutch Butterfly Conservation

Butterfly Conservation Europe (BCE)

Centre for Ecology and Hydrology (UKCEH)

Butterfly Conservation (BC UK)



Expanding Monitoring of Butterflies for Restoration And Conservation across Europe 2021-2026 (EMBRACE)



Chris van Swaay

De Vlinderstichting / Dutch Butterfly Conservation

Butterfly Conservation Europe (BCE)

Centre for Ecology and Hydrology (UKCEH)

Butterfly Conservation (BC UK)



EMBRACE: all about Butterfly Monitoring



ENTOMOLOGIST'S GAZETTE, Vol. 26

79

A METHOD OF ASSESSING THE ABUNDANCE OF BUTTERFLIES IN MONKS WOOD NATIONAL NATURE RESERVE IN 1973

By E. POLLARD, D. O. ELIAS, M. J. SKELTON & J. A. THOMAS
Monks Wood Experimental Station, Abbots Ripton, Huntingdon*

There is a need for a simple reliable method of recording the abundance of butterflies in nature reserves and similar places so that changes from year to year can be assessed. The method described

EMBRACE: all about Butterfly Monitoring

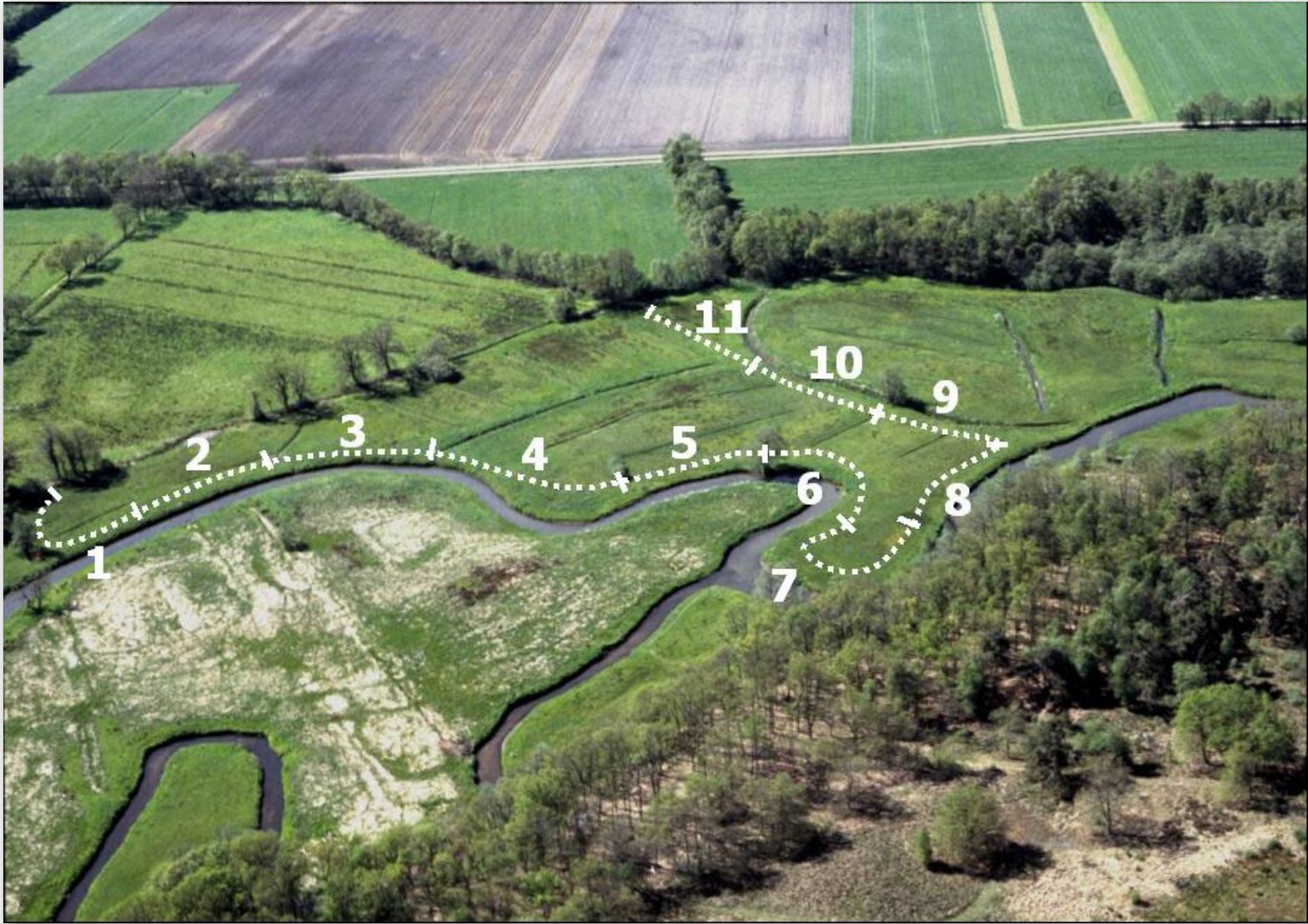


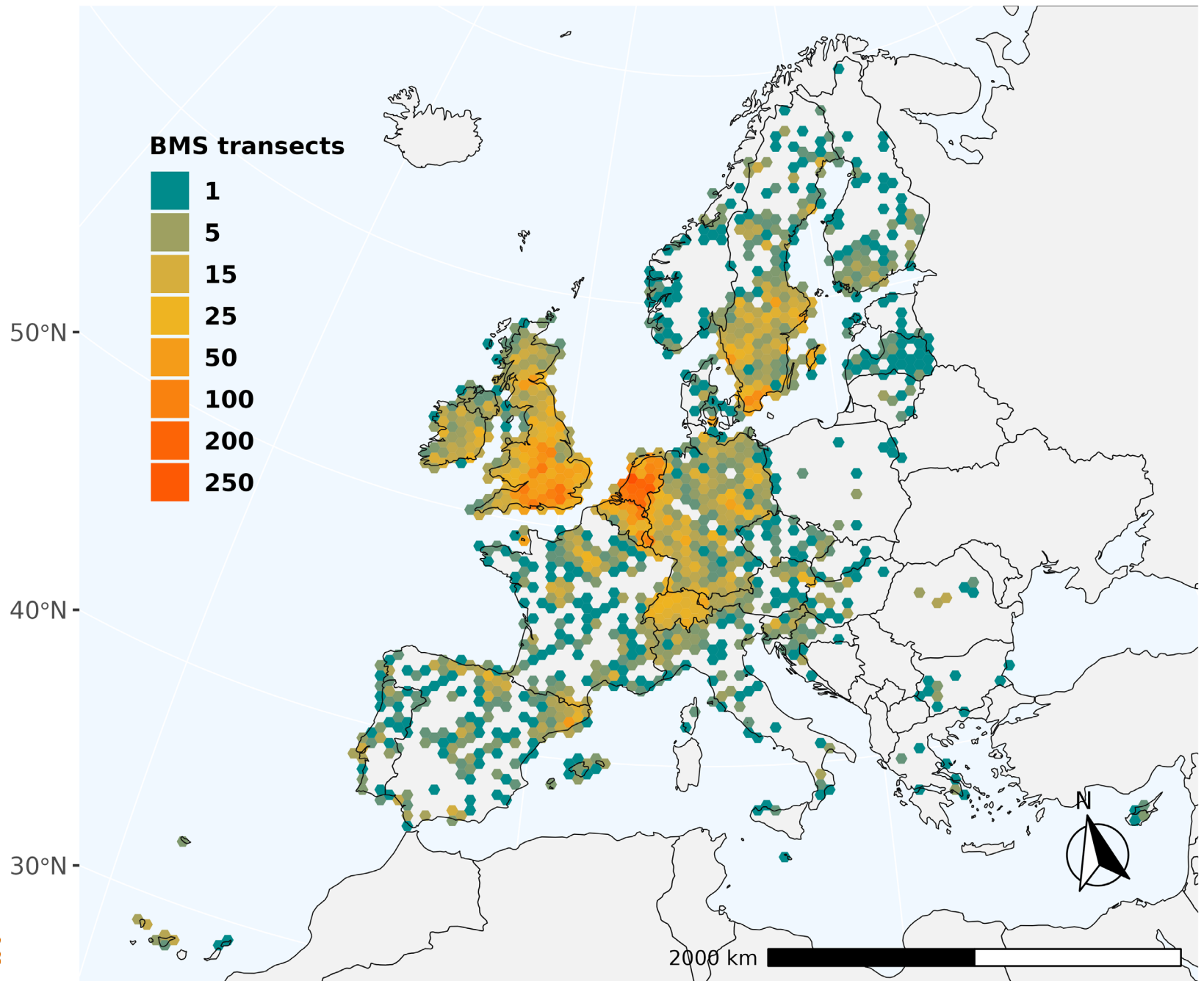
Butterfly monitoring:

- Since 1973 (UKBMS started 1976)
- Repeated transect-counts of butterflies to species level following protocol
- Mainly by expert-volunteers (citizen science)
- Many sites, number still growing
- Scalable: local/regional/national/continental
- Golden standard: many scientific publications



Fieldwork: butterfly counts on transects





National Butterfly Monitoring co-ordinators



- Collect the counts
- Validate the counts
- Can calculate national trends and indicators
- Lead data to eBMS: central database



EMBRACE

- Extend eBMS network
- Support BMS co-ordinators
- (2 April: workshop)
- Capacity building
- Grassland Butterfly Index (GBI) on European/EU level





European Grassland Butterfly Index GBI

- Oldest butterfly indicator: since 2005
- 17 characteristic grassland butterflies
- Both specialist and widespread species

Grassland Butterfly Index GBI

- 2005: first version, limited by resources ('only' 17 species)

© PENSOFT Publishers
Sofia – Moscow

E. Kuehn, J. Thomas, R. Feldmann & J. Settele (Eds) 2005
Studies on the Ecology and Conservation of Butterflies in Europe
Proceedings of the Conference held in UFZ Leipzig, 5-9th of December, 2005, pp. 00-00

Using butterfly monitoring data to develop a European grassland butterfly indicator

Chris Van Swaay¹ & Arco van Strien²

¹ De Vlinderstichting/Dutch Butterfly Conservation & Butterfly Conservation Europe,
P.O. Box 506, NL-6700 AM Wageningen, Netherlands

² Statistics Netherlands, P.O. Box 4000, 2270 JM Voorburg, Netherlands

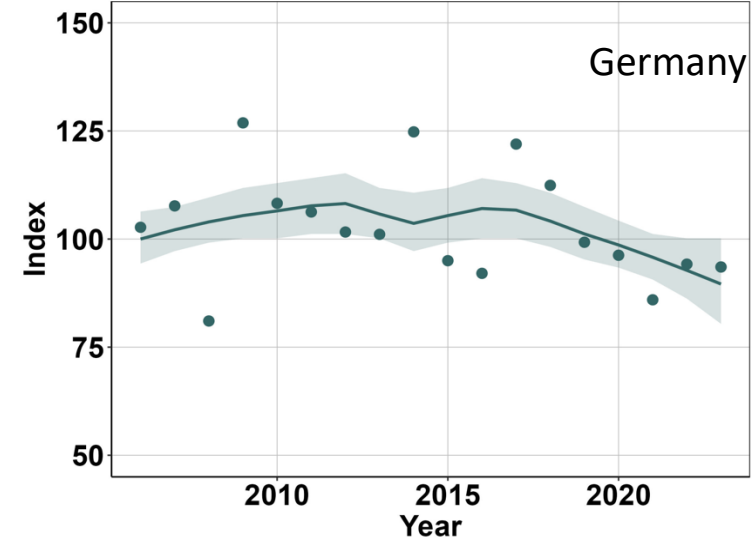
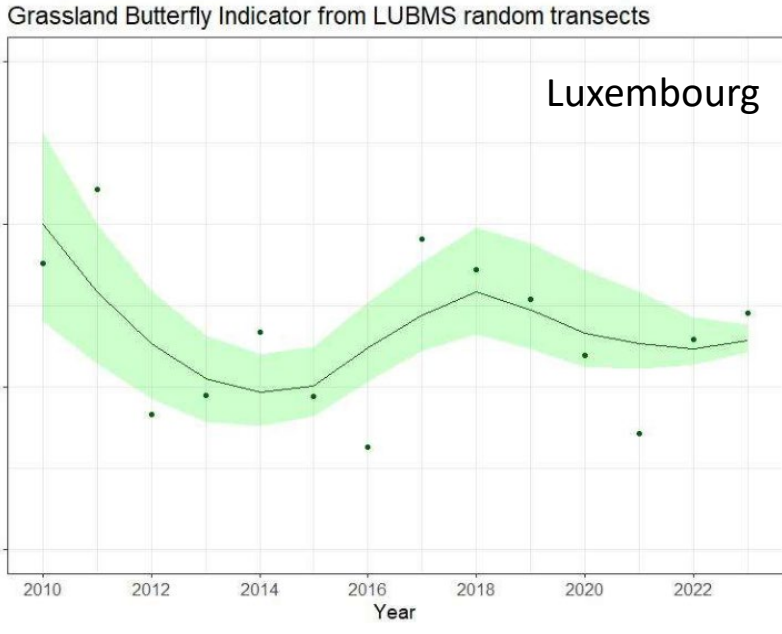
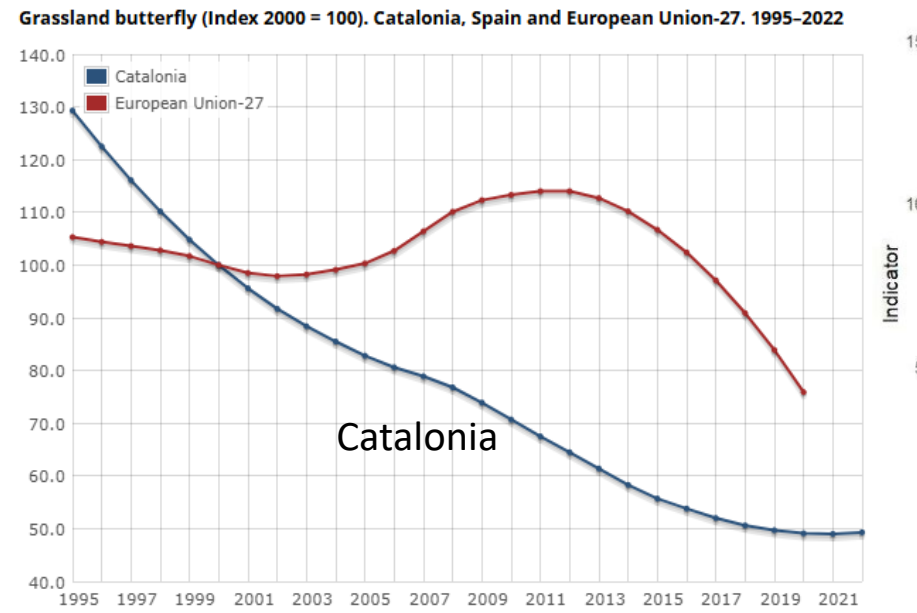
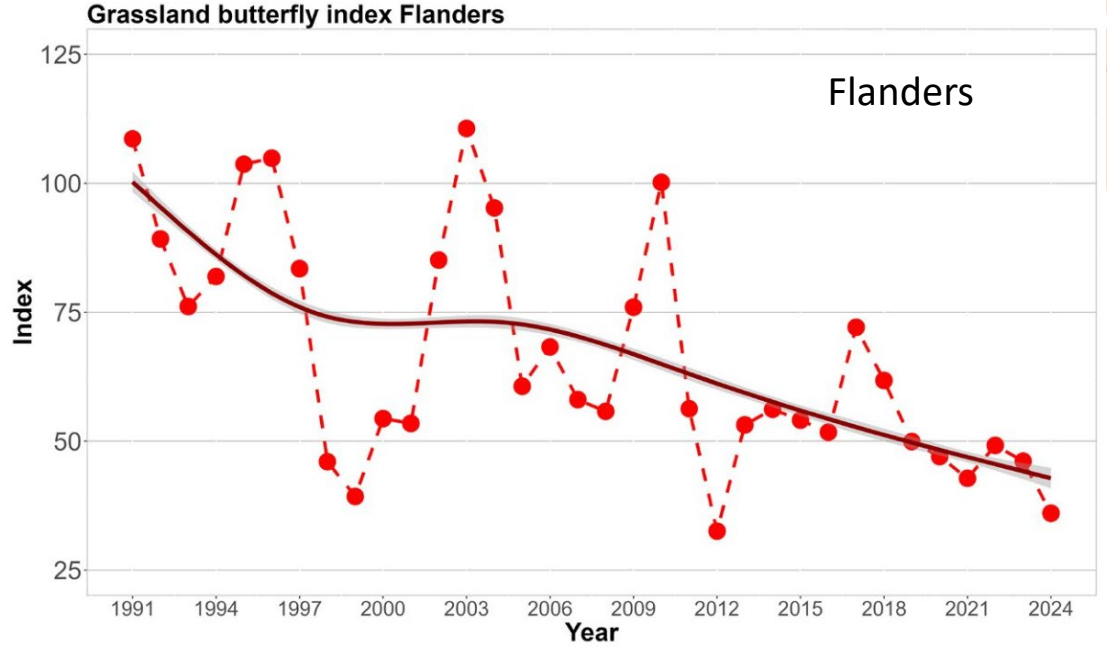
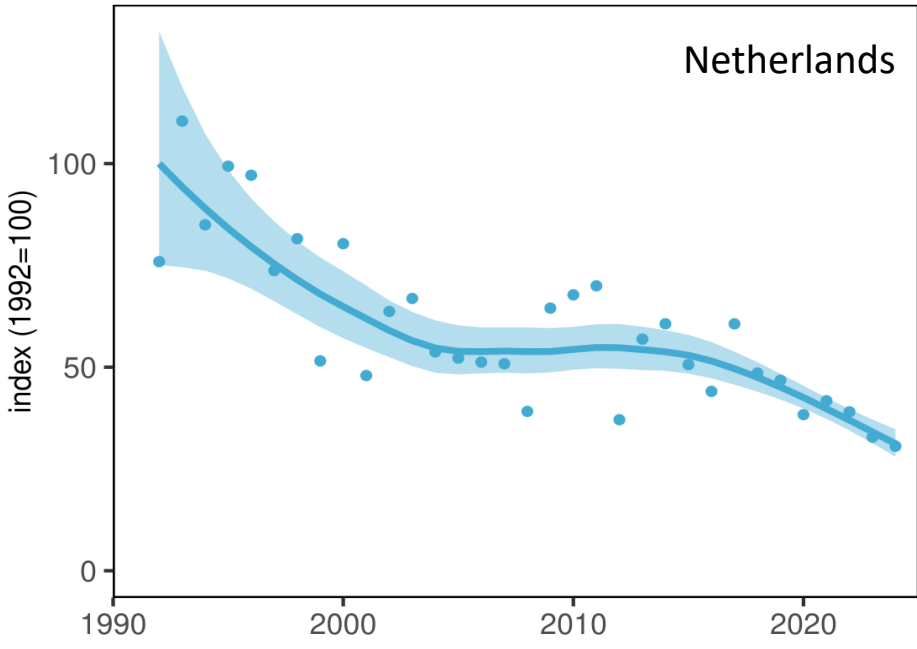
Contact: chris.vanswaay@vlinderstichting.nl



Grassland Butterfly Index GBI

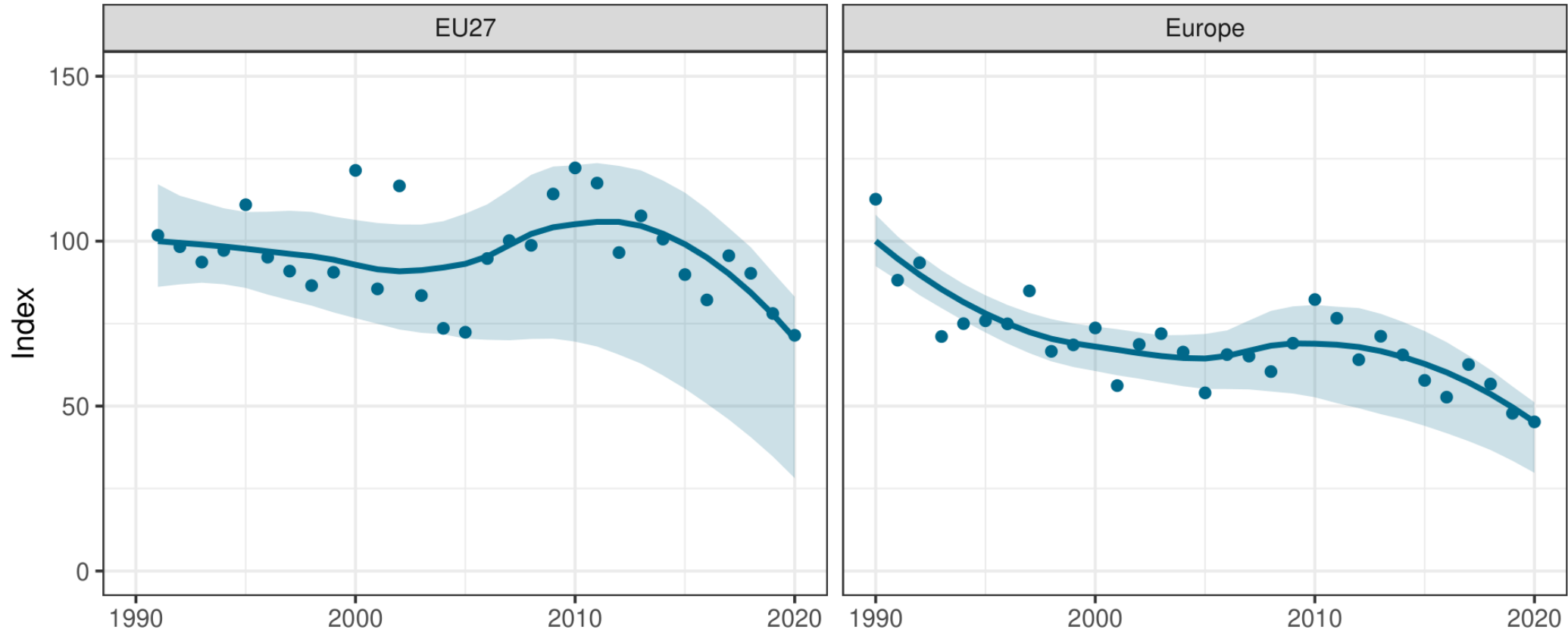
- 2005: first version, limited by resources ('only' 17 species)
- Regular updates with existing data
- ABLE 2019-2020: extension of butterfly monitoring in Europe + update GBI
- SPRING 2021-2023: update up to 2020
- EMBRACE 2025-2026: update up to 2025





Source Catalonia: Ministry of Climate Action, Food and Rural Agenda. Source Spain and European Union: Eurostat.

GBI: last update



Intensification



Abandonment



EMBRACE - timeline



- Support national BMS's
- Workshop for BMS co-ordinators (e.g. Wageningen, 2 April 2025)
- April 2025: GBI for EU/Europe 1990-2022
- Capacity building
- Support in building national GBI's
- December 2025: GBI for EU/Europe up to 2024
- December 2026: GBI for EU/Europe up to 2025



Chris van Swaay

chris.vanswaay@vlinderstichting.nl

De Vlinderstichting

Mennonietenweg 10

Postbus 506

6700 AM Wageningen

info@vlinderstichting.nl

www.vlinderstichting.nl